

Emerging roles of CST in maintaining genome stability and human disease

Jason A. Stewart¹, Yilin Wang¹, Stephanie M. Ackerson¹, P. Logan Schuck¹

¹Department of Biological Sciences, University of South Carolina, Columbia, SC 29208

TABLE OF CONTENTS

1. Abstract
2. Introduction
3. The CST complex
 - 3.1. Conservation of CST complexes
 - 3.2. DNA binding activity
 - 3.3. Stimulation of DNA polymerase alpha-primase
4. Importance for cell survival
5. Roles in telomere replication
 - 5.1. Telomerase inhibition and C-strand fill-in
 - 5.2. Telomere duplex replication
6. Emerging roles in genome-wide replication rescue following fork stalling
 - 6.1. Replication of repetitive DNA elements
 - 6.2. Dormant origin activation
 - 6.3. Consequences of unreplicated DNA in mitosis
7. CST and disease
 - 7.1. Coats plus and dyskeratosis congenita
 - 7.2. Cancer
 - 7.3. Genome-wide association studies
8. Summary and perspectives
9. Acknowledgments
10. References

1. ABSTRACT

The human CTC1-STN1-TEN1 (CST) complex is a single-stranded DNA binding protein that shares homology with RPA and interacts with DNA polymerase alpha/primase. CST complexes are conserved from yeasts to humans and function in telomere maintenance. A common role of CST across species is in the regulation of telomere extension by telomerase and C-strand fill-in synthesis. However, recent studies also indicate that CST promotes telomere duplex replication as well the rescue of stalled DNA replication at non-telomeric sites. Furthermore, CST dysfunction and mutation is associated with several genetic diseases and cancers. In this review, we will summarize what is known about CST with a particular focus on the emerging roles of CST in DNA replication and human disease.

2. INTRODUCTION

DNA replication is a highly complex process that must be completed efficiently and with high fidelity

to prevent mutations, breaks and other damage to our genome. However, the replication machinery, known as the replisome, must navigate a complex chromatin environment of natural and acquired replication fork barriers (RFBs) that can slow or stall the replisome. These include repetitive sequences, DNA-bound proteins, R-loops, heterochromatin and DNA damage (1-3). Replication errors are a major cause of DNA damage and genome instability (3, 4). To overcome RFBs, a variety of specialized replication factors have evolved, including the telomere-associated CTC1-STN1-TEN1 (CST) complex. CST is a single-stranded DNA (ssDNA) binding protein that shares homology with the *Saccharomyces cerevisiae* Cdc13-Stn1-Ten1 complex and replication protein A (RPA) (5, 6). A conserved role of CST is in telomere replication and maintenance. However, recent studies also highlight a role for CST in promoting replication rescue at other repetitive genomic loci and the activation of dormant replication origins following replication stress (7-11).

Functions of the CST complex

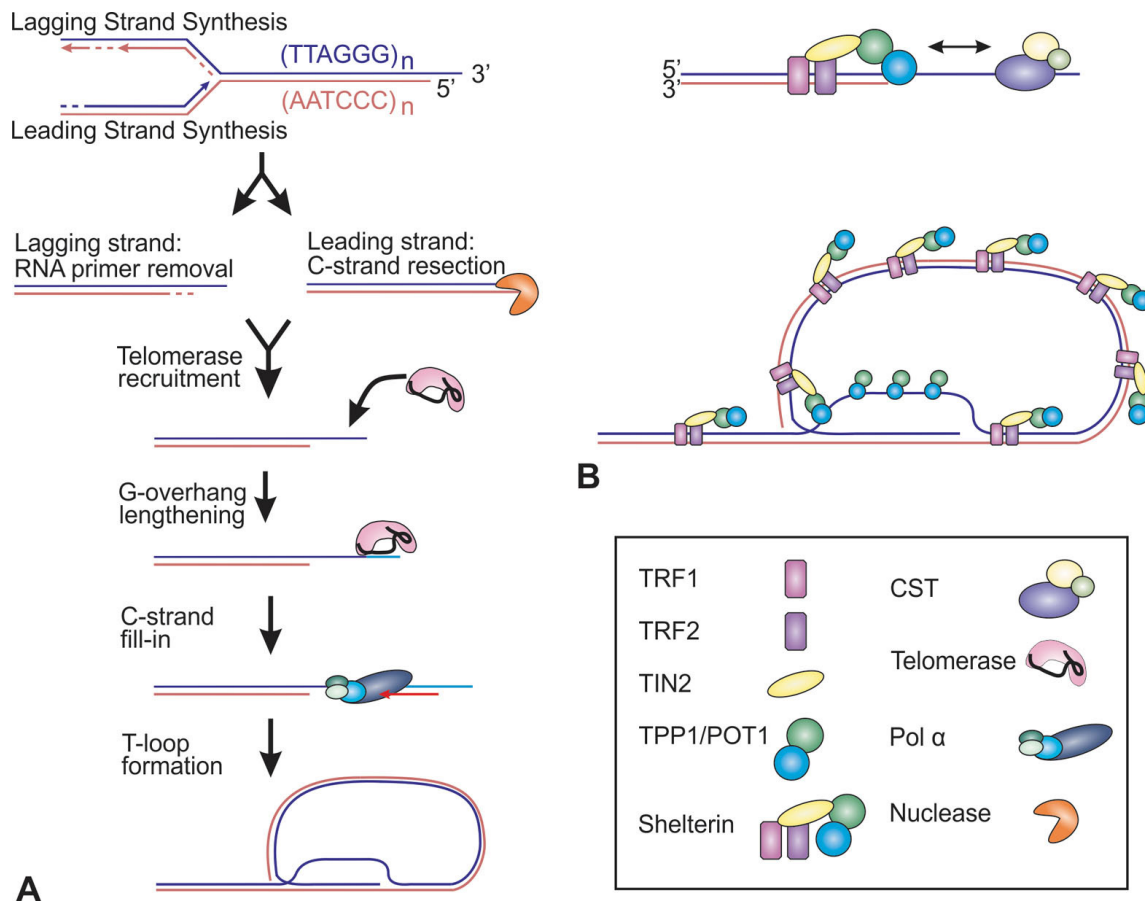


Figure 1. Overview of telomere replication and telomere protection complexes. (A) After duplex replication, G-overhangs are created on the lagging and leading strand through RNA primer removal or C-strand resection. The G-overhang is then extended by telomerase, followed by C-strand fill-in synthesis by pol alpha. Finally, the t-loop is reformed for telomere protection. (B) Top, telomeres are maintained in humans and many other organisms by both the shelterin and CST complexes. CST interacts with shelterin through TPP1. Bottom, the t-loop is bound and stabilized by shelterin.

Unlike budding yeast, where origins have defined sequence motifs, replication origins in higher eukaryotes are not defined by sequence but by chromatin context or DNA secondary structures, such as G-quadruplexes (G4s) (12-15). However, the process of origin licensing and activation is well conserved from yeasts to humans (16, 17). In humans, the origin recognition complex (ORC) binds to the chromatin and recruits CDT1 and CDC6 for loading of the MCM2-7 helicase in G1 of the cell cycle. This complex, known as the pre-replication complex (pre-RC), is required for origin licensing. After G1, no other origins are licensed to prevent re-replication during S-phase. The pre-initiation (pre-IC) complex is then formed by recruitment of the remaining factors through a series of phosphorylation events by DDK and CDK, leading to replication origin firing and DNA synthesis. Replication then proceeds in a semi-conservative fashion, with continuous synthesis on the leading strand and discontinuous synthesis on the lagging strand. During the process of replication, replisomes often stall due to RFBs (18, 19). To prevent DNA damage, cells have evolved various mechanisms to

rescue replication stalling. These include reactivating stalled replisomes, replication bypass or firing of nearby dormant replication origins (20). A highly abundant RFB is short tandem repeat sequences. Many of these repeats have the capacity to form DNA secondary structures, increasing the likelihood of stalling. One region that is particularly difficult to replicate are telomeres.

Telomeres are nucleoprotein complexes that serve to cap and protect the ends of linear chromosomes from degradation and chromosome fusions (21). They consist of short tandem repeats (5'-TTAGGG-3' in humans) that vary from several hundred nucleotides in yeast to tens of kilobases in mice and humans. Due to the G/C rich nature of the telomere, the 3' and 5' ends are referred to as the G- and C-strand, respectively. The G-strand ends in a short ssDNA region, referred to as the G-overhang, which creates a telomeric-loop (t-loop) by displacing a portion of the telomere duplex region (Figure 1) (22, 23). Telomeres are also capped by a number of protein factors, which promote chromosome end protection

Functions of the CST complex

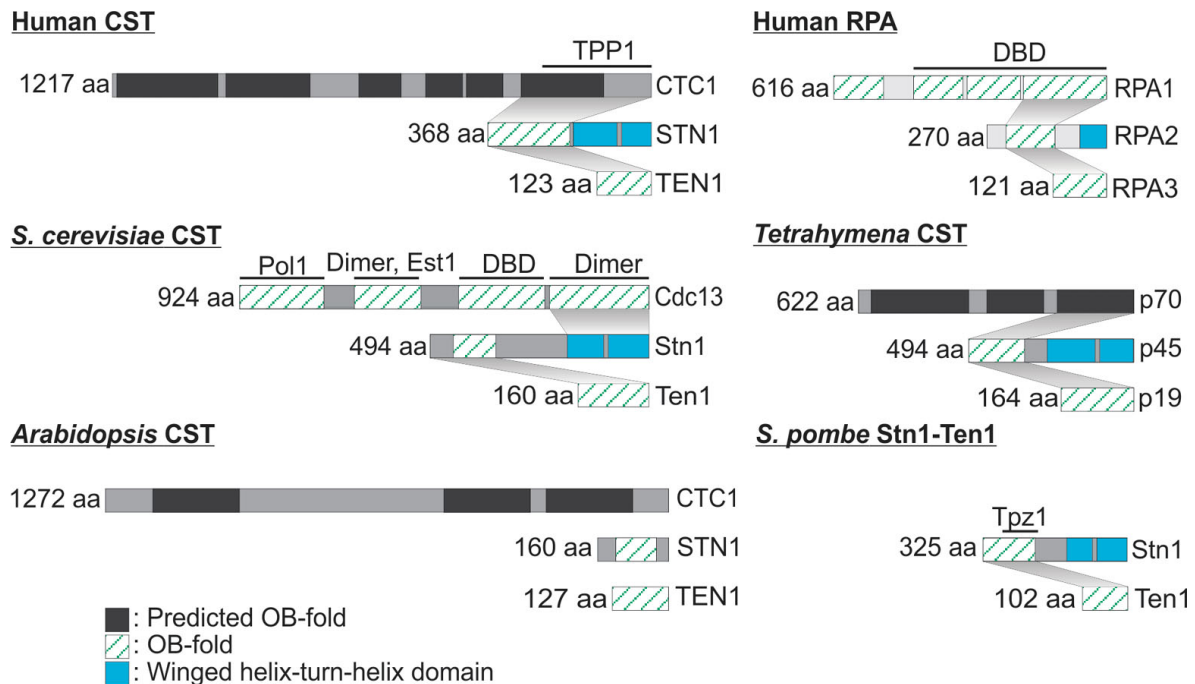


Figure 2. Comparison of CST complexes and human RPA. OB-folds and winged helix-turn-helix domains are shown to scale based off published crystal structures or structure predictions (see text for details). Black lines denote interactions sites with other proteins and DNA binding domains (DBD). Shaded areas between subunits denote interaction sites between CST subunits.

(Figure 1B). In vertebrates, telomeres are bound by the shelterin complex, which consists of double-stranded DNA (dsDNA) binding proteins, TRF1 and TRF2, the ssDNA G-overhang binding complex, POT/TPP1, TIN2, which bridges the interaction between TRF1/2 and TPP1/POT1, and RAP1 (24). Collectively, this complex is responsible for maintaining telomeres with individual components playing specific roles in telomere end-protection and length regulation.

Due to their unusual structure and location at chromosome ends, telomere replication requires additional steps to prevent telomere shortening and loss (Figure 1A). The first step involves replication of the telomere duplex by the replisome. Replication of this region is particularly challenging because of the presence of DNA secondary structures, which include G4s and the t-loop (25). To overcome these RFBs, a number of additional factors, including CST, are recruited to complete telomere replication (26). Defects in this process can lead to telomere loss and fragility. Following completion of telomere duplex replication, RNA from the terminal Okazaki fragment on the lagging strand is removed, which leads to telomere shortening (27, 28). Additionally, telomere sequence is lost each cell cycle through nuclease resection of the C-strand (29-31). Over successive cellular divisions, telomeres can become critically short, leading to cellular senescence or apoptosis (27, 32). To overcome progressive telomere shortening, a ribonucleoprotein reverse-transcriptase, known as telomerase, extends the telomere end using an internal

RNA template (33). Following telomere extension, the C-strand is partially filled in by DNA polymerase alpha-primase (pol alpha), which leaves a short G-overhang for t-loop formation. Defects in G- or C-strand synthesis lead to telomere damage, genome instability and growth defects. Thus, it is essential to properly regulate each step of telomere replication.

3. THE CST COMPLEX

3.1. Conservation of CST complexes

In *S. cerevisiae*, no shelterin-like complex is present. Instead, telomeres are capped by two separate complexes. The telomere duplex is bound by a Rap1-Rif1/2 complex and the G-overhang by CST (Cdc13-Stn1-Ten1) (5). Until recently, no CST-like complexes had been discovered in other organisms, and it was thought that POT1/TPP1 had replaced CST on the G-overhang. However, in 2007, Martin *et al.* discovered orthologs of STN1 and TEN1 in *Schizosaccharomyces pombe*, which also has a shelterin-like complex (34-37). This led to the identification of CST complexes in higher eukaryotes, including humans, suggesting that CST and shelterin co-exist in many organisms to protect and maintain telomeres (Figure 1B) (38-44).

CST complexes consist of a large subunit, either CTC1 or Cdc13, and two smaller subunits, STN1 and TEN1 (Figure 2). The notable exception

is in *S. pombe* where no CTC1 or Cdc13 subunit has been identified (45). STN1 and TEN1 are conserved, while CTC1 and Cdc13 do not share sequence homology and, at present, the extent of functional similarity is unclear. However, both contain multiple oligonucleotide-oligosaccharide (OB)-folds, which are utilized for ssDNA binding and protein-protein interactions. OB-folds are commonly found in other telomere and ssDNA binding proteins (46, 47). *S. cerevisiae* Cdc13 contains four OB-folds, three of which have been structurally determined (42, 48-50). Interestingly, only one is required for ssDNA binding (48, 50, 51). The other three are involved in protein-protein interactions and homodimerization of Cdc13 (52, 53). No structural data is currently available for human CTC1 but structure modeling suggests that it contains three to six OB-fold domains (7, 39, 40). Structural studies of STN1 and TEN1 demonstrate that each contains a *bona fide* OB-fold with STN1 also containing two winged-helix-turn-helix domains (42, 44, 54).

CST structure is strikingly similar to that of RPA (Figure 2) (54, 55). RPA is a highly abundant ssDNA binding protein that plays an essential role in DNA replication, DNA repair and DNA damage response pathways (56-58). RPA1, the largest subunit of RPA, contains multiple OB-folds, three of which are utilized for DNA binding. Phylogenetic analysis of STN1 and RPA2 indicate that they share a common ancestor but are in distinct monophyletic groups (38, 59). In fact, the structural identity is sufficient that replacement of the OB-fold in Rpa2 with the OB-fold in Stn1 can rescue *rpa2Δ* in *S. cerevisiae*, leading some to suggest the CST is a telomeric version of RPA (60, 61). However, several differences also exist between RPA and CST, including an additional winged-helix-turn-helix domain in STN1 and DNA binding preferences (see below). Studies in yeast also found structural differences between the OB-fold domains of Cdc13 and Rpa1 (50).

3.2. DNA binding activity

Due to their similar structure and shared homology, CST binding has been contextualized through our understanding of RPA (56-58). One of the unique features of RPA is its ability to dynamically bind to ssDNA in a sequence independent manner. This dynamic binding is facilitated through the use of multiple OB-folds that allow RPA to bind in distinct modes. These binding modes are dependent on the number of OB-folds engaged and ssDNA length. Two OB-folds in RPA1 make up the DNA binding core and are required for initial binding to short regions of ssDNA (8-10 nt). As length increases, other OB-folds are engaged, eventually leading to sub-nanomolar binding of RPA on ~30 nt of ssDNA. Like RPA, human CST binds to ssDNA in the low to sub-nanomolar range and requires multiple OB-folds for DNA binding. Recent work has

highlighted that CST also dynamically binds to ssDNA with a minimal binding site of 16-18 nt and maximal binding around 48 nt (7, 62, 63). However, unlike RPA, CST has both sequence specific and sequence independent binding modes. For example, CST can stably bind an 18 nt G-strand telomere sequence whereas binding is not observed on random or non-telomeric sequences until they are 32-36 nt in length. The preference for short G-rich sequences is facilitated in part by STN1, as mutation of key residues in the STN1 OB-fold leads to decreased binding on short G-strand sequences (7). Interestingly, this sequence specific binding mode is related to the G-rich nature of the DNA sequence and not the telomere sequence per se (63). In contrast to human CST, *S. cerevisiae* CST shows little to no binding on non-telomeric sequences and Cdc13 can bind ssDNA independent of Stn1 and Ten1, suggesting evolutionary differences between CST complexes (64, 65). Nevertheless, these differences may be limited to *S. cerevisiae*, as Cdc13 from other budding yeast species bind to both G-rich and non-telomeric sequences (66, 67).

Recent work by Bhattacharjee *et al.* highlighted additional properties of CST binding that are likely important for cellular function (62). First, CST preferentially binds to ss-dsDNA junctions in a sequence independent manner. Second, CST can bind and melt G4s *in vitro*, which is likely important for promoting replication restart (see below). Third, they were able to show that excess CST levels leads to facilitated self-dissociation *in vitro*. This activity is likely related to the facilitated exchange activity of RPA, which promotes the recruitment and binding of DNA replication/repair factors (68, 69). Collectively, these findings indicate that CST possesses a variety of DNA binding activities that allows it to function in multiple DNA replication/repair processes.

3.3. Stimulation of DNA polymerase alpha-primase

In a study by Goulian *et al.* in 1990, mouse lymphoblast cells were used to purify pol alpha interacting partners. In their study, they identified a pol alpha accessory factor (AAF) that stimulated the primase and polymerase activities of pol alpha *in vitro* (70, 71). Intriguingly, no follow-up studies were performed on AAF until 2009, when Casteel *et al.* published a report in which they cloned and sequenced AAF and found that it shared homology with RPA (59). Shortly after publication of this study, the first reports on mammalian CST were published and it was discovered that AAF encoded CTC1 (AAF132) and STN1 (AAF44) (39, 40). These initial studies provided the first evidence that CST interacts with pol alpha and may be involved in DNA replication. Since the discovery of AAF, CST complexes in various organisms have also been shown to interact both genetically and physically with pol alpha (5, 72). Pol alpha plays an important role

in DNA replication as well as DNA repair and activating the DNA damage response through continued primer synthesis (73). Understanding the mechanism by which CST interacts with and stimulates pol alpha continues to be an important area of research, with recent studies suggesting that CST stimulates both pol alpha primase activity and the primase to polymerase switch (43, 74, 75).

4. IMPORTANCE FOR CELL SURVIVAL

Across different species, depletion or removal of CST has been shown to affect cell growth, often leading to checkpoint activation and cell cycle arrest (37, 40, 41, 76-80). *CTC1* deletion in mice and humans leads to defects in telomere replication, a global DNA damage response, G2/M arrest and premature cellular senescence (81, 82) (Ackerson & Stewart, unpublished result). *CTC1* deletion in mice is not embryonic lethal, but results in smaller birth weight, sparse fur covering and premature death from bone marrow failure, features that are also associated with the genetic disorders Coats plus and dyskeratosis congenita (see below) (81). Analysis of highly proliferative tissues from the *CTC1* knockout mice revealed a significant decline in replicating cells, suggesting a loss of stem cell compartments. While deletion of mammalian *STN1* or *TEN1* has not been reported, knockdown of these subunits can lead to growth defects, cellular senescence and hypersensitivity to replication inhibitors (10, 11, 83-86).

In contrast to the effects of CST depletion, overexpression of CST in human cells increases cell survival following replication stress (11). Interestingly, the increased survival does not stem from changes in telomere length but excessive replication origin firing after the removal of hydroxyurea (HU). A recent study by Wang *et al.* also showed that *CTC1* or *TEN1* overexpression can also promote senescence bypass, a proposed mechanism of carcinogenesis (87). Senescence bypass is typically accomplished through direct or indirect inactivation of p53, p16^{INK4A} or RB1, leading to the evasion of cellular senescence (88, 89). While the biological relevance of these CST overexpression studies is unclear due to the non-physiological levels of protein, they do suggest that increased CST may bypass normal cellular checkpoints to promote cell survival.

Overall, these findings indicate that aberrant CST expression significantly influences cell growth. However, the contributions of telomeric-related defects compared to other forms of genome instability on cell growth remain unclear. For example, a study by Feng *et al.* showed that rescue of telomeric DNA damage signaling did not rescue cell growth in *CTC1* deleted cells (82). Additionally, premature senescence was observed in cells from Coats plus patients with normal

telomere length, suggesting that growth arrest still occurs in the absence of telomere shortening (90).

5. ROLES IN TELOMERE REPLICATION

5.1. Telomerase inhibition and C-strand fill-in

CST plays conserved roles in both the inhibition of telomerase following telomere extension and facilitating C-strand fill-in (Figure 3A) (39, 40, 44, 45, 91, 92). Much of our understanding of how CST functions in this capacity comes from studies in budding yeast. Here, the process is elegantly coordinated by post-translational modification of Cdc13 (52, 77, 93, 94). Following telomere duplex replication, Cdc13 is phosphorylated by Cdk1 and the Mec1/Tel1 complex, leading to the dissociation of Stn1-Ten1 and the recruitment of telomerase for telomere extension (95, 96). Sequential dephosphorylation and phosphorylation of Cdc13 by PP2A and Aurora, respectively, then leads to the dissociation of telomerase, the recruitment of Stn1-Ten1 and C-strand fill-in synthesis (97, 98). Whereas, modification of Cdc13 modulates the switch between telomere extension and C-strand fill-in in budding yeast, in fission yeast and mammals the shelterin component TPP1 (Tpz1 in *S. pombe*) functions in this capacity (Figure 3A). In this case, it is proposed that TPP1 recruits telomerase for telomere extension followed by the recruitment of CST in mammals or Stn1-Ten1 in *S. pombe* for telomerase inhibition and C-strand fill-in synthesis by pol alpha (45, 82, 92, 99-106). In both fission yeast and humans, this switch appears to be regulated by post-translational modification of TPP1 (107-110). However, how the switch occurs and whether CST is also post-translationally modified requires further investigation. Interestingly, CST depletion does not always lead to telomere elongation in human cells, suggesting that additional mechanisms may also regulate telomerase inhibition (85, 91).

5.2. Telomeric duplex replication

As mentioned previously, telomeres are composed of highly repetitive sequences and form DNA secondary structures (G4s, t-loops), which can stall telomere replication (111, 112). Such stalling can lead to unreplicated DNA or DNA breaks. Previous studies showed that disruption of CST subunits leads to a delay in telomere duplex replication and the formation of multiple telomeric signals (MTS), or fragile telomeres (10, 81, 84-86, 91). MTS manifest as gaps or breaks in telomere fluorescence *in situ* hybridization (FISH) signals on metaphase chromosomes and are similar to common fragile sites. These signals were first observed with deletion of TRF1 in mice (112, 113). MTS are proposed to arise from replication stalling and were also observed with the depletion of other DNA replication proteins, including FEN1, BLM and RTEL

Functions of the CST complex

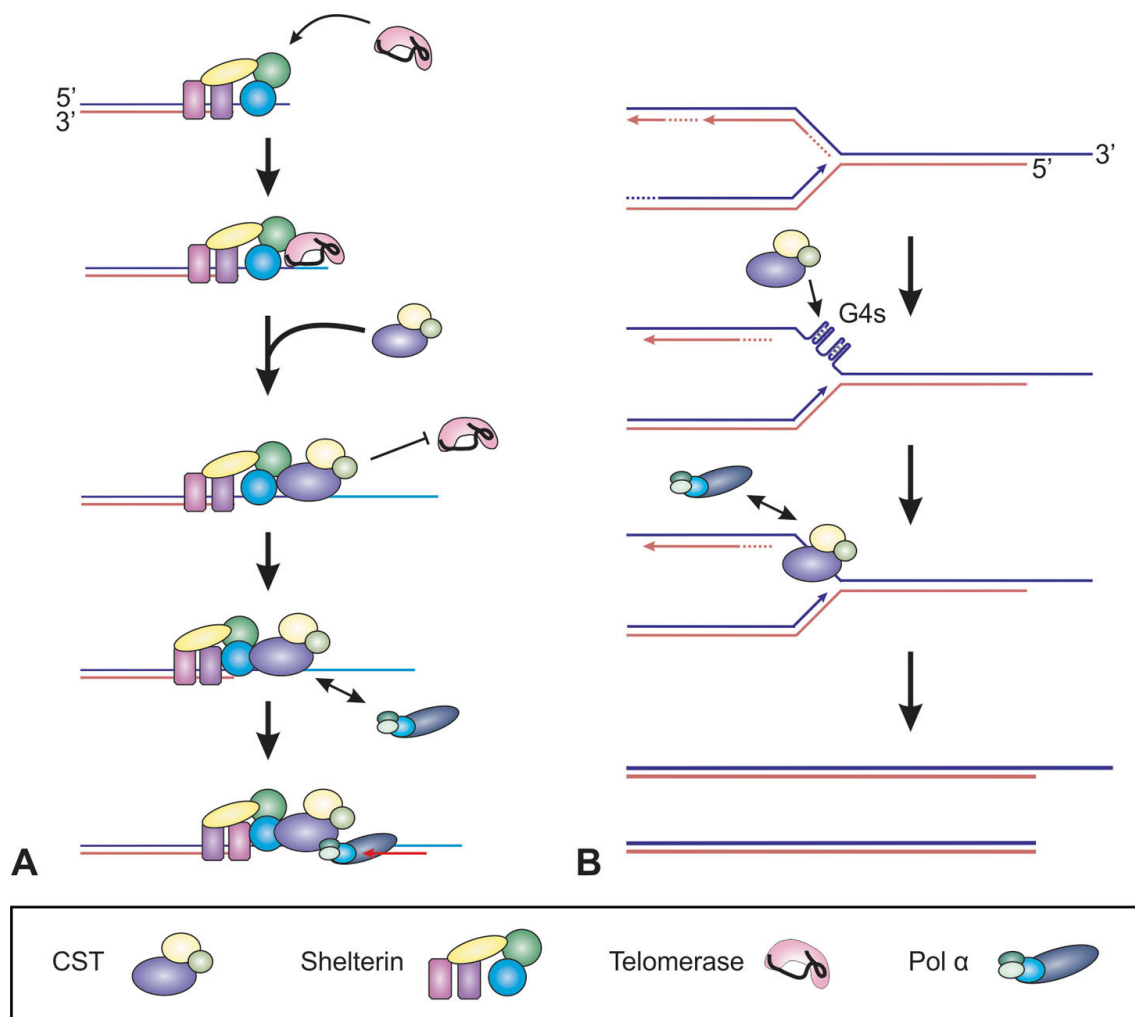


Figure 3. Proposed functions of CST during telomere replication. (A) Telomerase is recruited by TPP1 for telomere extension. After G-overhang extension, CST is recruited to the telomere by TPP1. This leads to telomerase inhibition followed by polymerase alpha-mediated C-strand fill-in synthesis. (B) CST promotes telomere duplex replication by preventing or removing G-quadruplexes (G4s) and/or the recruitment of pol alpha for replication restart.

(112, 114, 115). Consistent with this idea, MTS in STN1 depleted cells do not increase following treatment with the replicative DNA polymerase inhibitor, aphidicolin (91). Furthermore, mutation of the STN1 OB-fold, which affects G-rich binding, cannot rescue MTS formation in STN1 depleted cells, suggesting this binding mode is required for telomere duplex replication (7). Furthermore, this function may be conserved in other species, as studies in *Arabidopsis* and fission yeast also indicate a role for CST in telomere duplex replication (9, 116).

6. EMERGING ROLES IN GENOME-WIDE REPLICATION RESCUE FOLLOWING FORK STALLING

From its initial discovery, several pieces of evidence suggested that mammalian CST also has non-telomeric roles. The first, and perhaps most striking, is

that CTC1 and STN1 were originally discovered as pol alpha accessory factors (59, 70, 71). Second, only a fraction of STN1 foci (~20%) co-localize with telomeres (39). Third, depletion of CST subunits leads to signs of general genome instability, such as non-telomeric γ -H2AX foci, anaphase bridges and micronuclei (40). As outlined below, recent studies have also uncovered roles for CST in DNA replication rescue, preventing chromosome fragility and other signs of general genome instability. Additionally, analysis of STN1 in *Arabidopsis* suggests that CST promotes genome-wide DNA replication in plants (9). At present, *S. cerevisiae* CST has not been shown to function outside the telomere, however, overexpression of Stn1 leads to non-telomeric localization and genome-wide replication defects (117).

The discovery that AAF (CTC1-STN1) co-purified with pol alpha suggested that CST might be

Functions of the CST complex

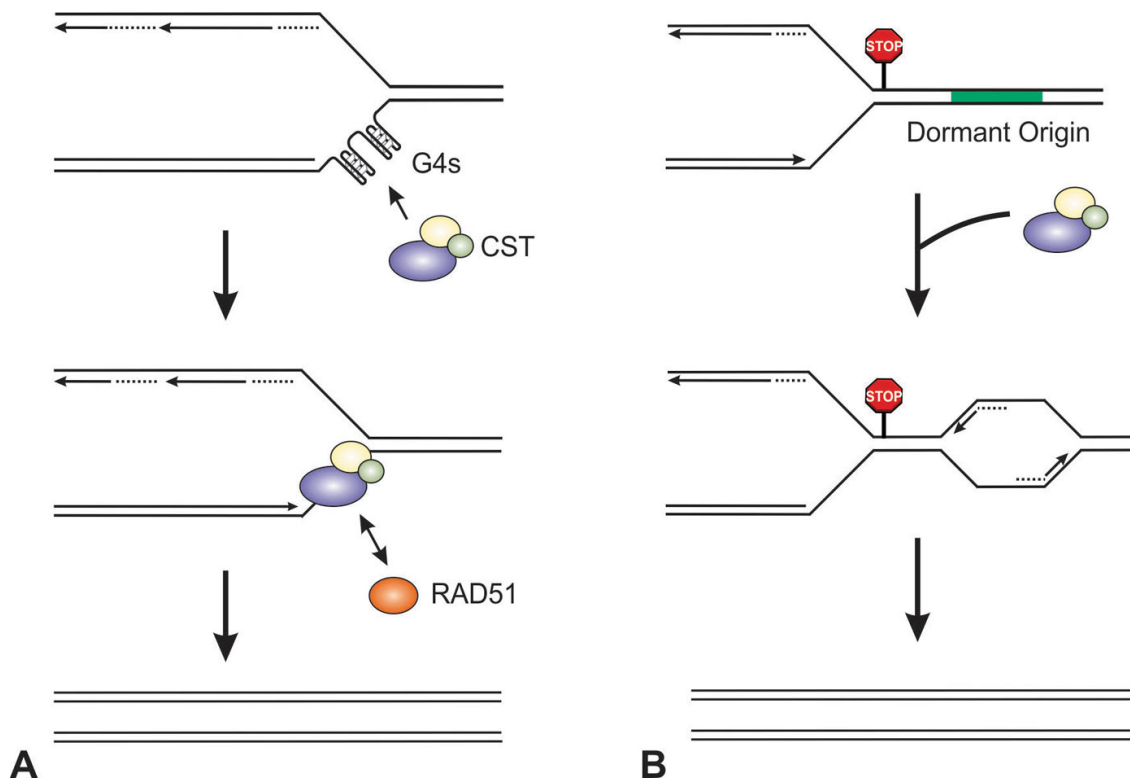


Figure 4. Model for CST function in replication restart at non-telomeric DNA. CST is proposed to function in two different aspects of replication rescue. (A) Synthesis through GC-rich repetitive sequences can lead to the formation G-quadruplexes (G4s) and replication stalling. CST is localized to these GC-rich regions to either prevent or remove G4s. If stalling does occur, then CST recruits other factors, such as RAD51, for recombination or fork reversal followed by replication restart. (B) CST promotes the firing of nearby dormant origins following stalling. This likely occurs by recruiting specific factors, such as pol alpha, for replisome assembly or replication initiation.

a constitutive component of the replisome. Indeed, Casteel *et al.* reported that CTC1 (AAF132) and STN1 (AAF44) co-localize with PCNA, a marker of active replication, and that STN1 knockdown results in decreased replication rates (59). However, another study by Miyake *et al.* was unable to detect co-localization of STN1 with replication foci and CST components have not been identified in unbiased screens for replication factors (4, 39, 118). Moreover, knockdown of STN1 does not significantly affect bulk DNA replication (10). Thus, current opinion is that CST is not a constitutive component of the replisome but instead acts as a specialized replication factors at repetitive GC-rich regions, such as telomeres.

6.1. Replication of repetitive DNA elements

To better understand the contribution of CST at non-telomere sites, Chastain *et al.* performed chromatin-immunoprecipitation with sequencing (ChIP-seq) using epitope-tagged human STN1 (8). This analysis was performed on S-phase cells treated with HU, which induces replication stalling. Under these conditions, STN1 levels were enriched at repetitive elements across the genome, including long interspersed nuclear elements (LINEs), short interspersed nuclear elements (SINEs) and short

tandem repeats. Surprisingly, over 70% of STN1 binding sites were localized within CpG islands, which are important for transcriptional regulation as well as sites of replication initiation (12, 13, 119, 120). Interestingly, only a small portion of STN1 localized to common chromosomal fragile sites. Yet, chromosome fragility was observed at several sites following STN1 knockdown. Interestingly, CST and RAD51 were shown to physically interact and co-localize following HU-induced fork stalling. RAD51 is the eukaryotic homologue of *Escherichia coli* RecA and plays an integral role in homologous recombination, stabilizing stalled replication forks and facilitating replication restart (121, 122). STN1 depletion also impaired RAD51 recruitment to telomeres and other GC-rich sites (8). These findings suggest that CST may recruit RAD51 to GC-rich regions to initiate recombination-based replication restart (Figure 4A). CST may also act to remove G4s at GC-rich sequences for replication restart or dormant origin activation (see below).

6.2. Dormant origin activation

Replication stalling can also lead to a particularly deleterious situation known as a double fork stall (DFS). This occurs when converging replisomes stall leaving an unreplicated region of

DNA. If left unresolved, DFSs can lead to DNA breaks during mitosis. However, these events are quite common in human genome, with one to three DFSs predicted to occur each cell cycle (18, 19). The activation of dormant replication origins is a common pathway to rescue DFSs (123, 124). Dormant origins are defined as origins that have been licensed by loading of MCM2-7 but remain inactive in a typical S-phase. However, DFSs or other forms of replication stress can trigger their activation to facilitate replication rescue. On average, two to three dormant origins exist for every active origin in a typical S-phase (18). If the number of licensed origins is decreased by partial knockdown of MCM2-7 subunits, DFSs significantly increase leading to DNA damage (19). However, the process of dormant origin activation is poorly understood. It is unclear whether these origins are stochastically activated, as replication initiation factors become available, or require specific factors. Surprisingly, depletion of STN1 or overexpression of CST following HU-induced replication stalling decreases or increases new origin firing, respectively (10, 11). These results suggest that CST expression levels correlate with origin firing in response to replication stress, arguing that CST is important for activating dormant origins (Figure 4B). How CST promotes dormant origin activation is still unclear but it likely involves the recruitment of other factors, such as pol alpha, or the resolution of G4s.

6.3. Consequences of unreplicated DNA in mitosis

Following successful DNA replication, chromosomes must be faithfully segregated into dividing cells in order to maintain genome stability. However, unresolved replication intermediates, fusions or concatenation can lead to entanglement of chromosomes before their separation in mitosis (125, 126). This can result in anaphase bridges, which are DAPI-stained bridges that span across separating sister chromatids. These bridges are associated with replication stalling at difficult to replicate loci and often lead to chromosome breakage and micronuclei formation (127, 128). Depletion or disruption of CST subunits leads to anaphase bridges in human, mouse and plant cells (10, 40, 41, 85). STN1 and CTC1 knockdown in human cells also leads to increased micronuclei formation (10, 40). The cause of these anaphase bridges are still unclear but, in *Arabidopsis* and mice, disruption of CST subunits cause a significant increase in telomeric fusions, which could result in anaphase bridges. However, in human cells, several pieces of data suggest that the anaphase bridges are non-telomeric. First, while depletion of CST subunits or CTC1 deletion results in the loss of telomeric signal, chromosome fusions are very uncommon (10, 40, 85). Second, non-telomeric DNA damage foci are present in CTC1 and STN1 depleted cells (40, 84, 86). Finally, anaphase bridges in TEN1 depleted cells were not

enriched with telomeric DNA (85). These findings suggest that these anaphase bridges arise from unresolved replication intermediates at other genomic loci. This would be in line with a role for CST in genome-wide replication rescue, as described above. However, further research is required to directly link the formation of anaphase bridges with replication defects at specific loci in CST depleted cells.

7. CST AND DISEASE

During the ensuing years since the discovery of CST, mutations in CTC1 and STN1 have been associated with two genetic disorders (Coats plus and dyskeratosis congenita), increased risk of cancer, heart disease and pulmonary fibrosis. Surprisingly, TEN1 mutations have not yet been associated with human disease, which may be due to its small size or essential nature. In this section, we will describe the association between CST dysfunction and human disease.

7.1. Coats plus and dyskeratosis congenita

Coats plus (CP), also known as cerebroretinal microangiopathy with calcifications and cysts (CRMCC), is a pleiotropic, autosomal recessive disorder that is typically diagnosed in infancy or early childhood and carries high mortality and morbidity rates (129, 130). Loss of stem cell compartments appears to underlie the disease. CP has common features including intrauterine growth retardation, intracranial calcifications, retinopathy, neurological defects and gastrointestinal bleeding. Penetrance and expression of symptoms is wide-ranging and the cause of death varies greatly between patients, underscoring the complexity of CP. Until recently, the genetic alterations leading to CP were unknown. However, in 2012, CTC1 mutations were identified in a number of CP patients with additional cases later reported (131-135). Biallelic mutations in either STN1 or the shelterin component POT1 have also been shown to cause CP (90, 136). Interestingly, characterization of cells from the CP patient harboring POT1 mutations were shown to affect CST recruitment and positioning at the telomere, suggesting that CST misregulation also underlies CP in this patient (136).

CTC1 mutations were also found in patients with dyskeratosis congenita (DKC) (137, 138). DKC is in a class of short telomere spectrum disorders, often referred to as telomeropathies. These disorders encompass a variety of diseases ranging from childhood bone marrow failure disorders to adult-onset pulmonary fibrosis and liver disease (139-142). Like CP, the loss of stem cell compartments is thought to cause telomeropathies. CP shares common features with DKC and other childhood telomeropathies, including bone marrow failure, sparse and graying

hair, nail dystrophy and osteopenia. Furthermore, in a case report by Keller *et al.* a patient diagnosed with DKC showed intracranial calcifications and early signs of retinopathy, indicating overlap with CP (137). The fact that mutations in CST subunits cause both DKC and CP suggest a common molecular etiology. Several groups have proposed telomere shortening as the common denominator (72, 131, 143). However, there have been conflicting reports on whether all CP and DKC patients with mutations in *CTC1* or *STN1* have shortened telomeres. In a study by Anderson *et al.*, they reported telomere lengths at or below the first percentile, using flow-FISH, for multiple CP patients (131). In contrast, studies by Walne *et al.* and Polvi *et al.* showed no significant changes in telomere length, using the more controversial quantitative PCR-based method (132, 135). Finally, Southern blot analysis of two CP patients with *STN1* mutations demonstrated one patient with decreased telomere length and the other with no significant length changes compared to control samples (90). At present, it is unclear whether these differences arise from the methods used to measure telomere length and/or variations in disease pathology from specific mutations.

Several studies have sought to determine the molecular consequences of CP mutations. *CTC1* mutations occur as compound heterozygotes with one allele typically harboring a frameshift or nonsense mutation and the other allele a missense mutation. Expression of the equivalent nonsense and frameshift mutants in mice produced truncated proteins that either express poorly or not at all, suggesting that these alleles are non-functional (143). Indeed, these mutants are unable to bind telomeric DNA, localize to telomeres or interact with STN1. Analysis of *CTC1* missense mutants showed hypomorphic phenotypes in CST, with some affecting DNA binding activity and telomeric association, while others led to changes in nuclear localization or decreased interaction with pol alpha (72). Yet, no common telomeric phenotype was observed across the mutants, opening the possibility that these mutations also affect the non-telomeric roles of CST. In agreement with this idea, cells from CP patients, with *STN1* mutation, had telomere dysfunction as well as signs of general genomic instability and DNA replication defects (90). Together, these results argue that defects in both telomeric and non-telomeric functions of CST contribute to CP, which may help explain the diversity of symptoms and their expression. To date no molecular studies of DKC patient-derived cells harboring *CTC1* mutations have been performed. However, stromal cells collected from one patient showed severe premature senescence (137), which was also observed in CP patient cells with *STN1* and *POT1* mutations. The authors of this study suggest that expression of both DKC and CP features may relate to environmental or genetic modifiers. Thus, further characterization of CP and DKC patient-derived

cells will be critical to understand CST and help in the treatment and management of these diseases.

7.2. Cancer

Alteration in the expression of CST subunits has been linked to increased cancer risk and poor prognosis of survival (87, 144-146). For example, decreased *CTC1* or *STN1* (also known as *OBFC1*) gene expression leads to decreased survival in breast, lung and gastric cancer patients (147). Single nucleotide polymorphisms (SNPs) in *CTC1* and *STN1* have also been associated with an increased risk of cancer development (see below). These findings are consistent with the fact that depletion of CST subunits leads to hallmarks of cancer, including telomere dysfunction and increased genome instability (anaphase bridges, micronuclei, DNA damage) (8, 10, 40, 85, 86, 92). Furthermore, increased *CTC1* expression leads to radioresistance in melanoma cancer cell lines by preventing telomere shortening and apoptosis (145). While further analysis is required, these results indicate that CST levels are tightly regulated to preserve genome stability and suggest that CST may be a promising target for cancer therapy.

7.3. Genome-wide association studies

Over the past seven years, SNPs in *STN1* and *CTC1* have been associated with a number of different diseases through genome-wide association studies (GWAS). The first study to discover pathogenic SNPs in *STN1* was focused on identifying loci associated with shortened leukocyte telomere length (LTL), which is linked to short telomere disorders, aging, heart disease and cancer (148). At the time, subunits of telomerase (*TERC*, *TERT*, *DKC1*) were the sole genes associated with shortened LTL. In this breakthrough study, Levy, *et al.* analyzed several cohorts, which included more than three thousand participants, to identify genetic loci associated with decreased LTL. They found SNPs in *STN1* and its surrounding gene region significantly associated decreased LTL. Since that time, GWASs have correlated SNPs in *STN1* with a variety of disease pathologies, including increased cancer risk (adult glioma, neuroblastoma, melanoma, epithelial ovarian cancer, chronic lymphocytic leukemia, thyroid cancer) (149-155), pulmonary fibrosis (156) and heart disease (157, 158). It is worth noting that many of these studies also identified SNPs in the core components of telomerase, *TERC* and *TERT*, and other proteins involved in telomere length regulation. Several studies have also identified *CTC1* SNPs associated with increased cancer risk and shortened LTL (149, 151, 153, 159). No studies to date have identified *TEN1* SNPs associated with disease pathologies.

8. SUMMARY AND PERSPECTIVES

CST is a conserved ssDNA binding protein that resembles RPA in many ways. Yet, CST has also developed specific features that distinguish it from RPA and allow it to act as a specialized replication factor. The DNA binding activity of human CST make it highly suited for its role in DNA replication both at the telomere and across the genome. Its ability to bind in both a sequence specific and sequence independent manner provide flexibility for CST to function in a variety of DNA maintenance pathways. On the one hand, the G-rich preference enables CST to maintain its conserved role in telomerase inhibition and C-strand fill-in synthesis. On the other hand, it can bind non-telomere regions to resolve genome-wide replication issues. While further characterization is required, CST binding likely involves an initial recognition of guanosine residues by OB-folds in STN1 and the C-terminus of CTC1 to initiate binding on short G-rich sequences (7).

CST can also bind and resolve G4s (62, 67, 160). This G4 binding could serve to localize CST to specific regions, such as telomeres and CpG islands, to promote G4 melting and stable binding (Figure 3 and 4) (8). Once stably bound, other OB-folds in CTC1 can be engaged, leading to high affinity binding. However, with longer ssDNA regions, the G-rich preference would not be required due to the engagement of additional OB-folds that are not dependent on guanosine residues. Since *S. cerevisiae* Cdc13 uses a single OB-fold for DNA binding, this may explain why its activity is restricted to telomeres. Biochemical and structural studies will be important to elucidate the different binding modes of CST and their conservation across species.

In addition to CST, several other DNA replication proteins, including BLM, WRN, RTEL and PIF1, promote telomere and genome-wide replication and unwind G4s (115, 161-165). Whether these factors coordinate with CST for replication rescue will require further investigation. However, a key feature of RPA is its ability to localize to specific sites and recruit other proteins for replication, repair and recombination. We presume that CST functions in a similar manner. For example, in C-strand fill-in, this likely involves the recruitment of pol alpha whereas CST could recruit RAD51 or other replication factors for replication restart (Figure 4A). The interaction between CST and pol alpha may also be important to stimulate the DNA damage response. Work by Van *et al.* found that continued primer synthesis by pol alpha promotes ATR-CHK1 activation. However, this is unlikely as STN1 knockdown does not lead to changes in CHK1 phosphorylation following HU treatment (10). Whether or not CST uses similar mechanisms to activate dormant replication origins is still an open question. Nevertheless, mutation of the STN1 OB-fold indicates

that dormant origin activation is separable from the role of CST in telomere duplex replication, suggesting that the G-rich binding mode of CST is not required for dormant origin activation (7). Additional studies are now needed to define other CST interacting partners and how CST utilizes its specific DNA binding modes during various DNA transactions.

The dual role of CST at both telomeric and non-telomeric sites is likely reflected in the different diseases and patient symptoms that associate with CST mutation. For example, while some CP patients exhibit telomere shortening, this may not always be the case. However, general genome instability is a common feature of CST mutation, suggesting that chromosome fragility caused by replication defects at both telomeric and other GC-rich sites may underlie features of the disease. It is possible that certain cell types may be particularly affected by such events, leading to an abrupt exit from the cell cycle and senescence or apoptosis. In contrast, defects in G- and C-strand synthesis would affect cell types (e.g. hemopoietic, skin, nail, lung) typically associated with short telomere disorders. Thus, the non-telomere defects are likely reflected in the additional symptoms of CP patients compared to DKC. However, further mechanistic studies are required to parse out the molecular consequences of CST patient mutations on its various replication-related activities. Such studies will greatly aid in understanding how CST mutation leads to disease and provide avenues to treat and prevent diseases associated with CST dysfunction.

9. ACKNOWLEDGEMENTS

This work is supported by the National Institutes of Health grant R00 GM104409 to J.A.S. and startup funds from the University of South Carolina to J.A.S. We would like to thank Dr. Carolyn Price for critical reading of the manuscript.

10. REFERENCES

1. M. K. Zeman and K. A. Cimprich: Causes and consequences of replication stress. *Nat Cell Biol*, 16(1), 2-9 (2014)
DOI: 10.1038/ncb2897
2. E. V. Mirkin and S. M. Mirkin: Replication fork stalling at natural impediments. *Microbiol Mol Biol Rev*, 71(1), 13-35 (2007)
DOI: 10.1128/MMBR.00030-06
3. D. Cortez: Preventing replication fork collapse to maintain genome integrity. *DNA Repair (Amst)*, 32, 149-57 (2015)
DOI: 10.1016/j.dnarep.2015.04.026
4. H. DUNGRAWALA, K. L. ROSE, K. P. BHAT, K. N. MOHNI, G. G. GLICK, F. B. COUCH and

- D. Cortez: The Replication Checkpoint Prevents Two Types of Fork Collapse without Regulating Replisome Stability. *Mol Cell*, 59(6), 998-1010 (2015)
DOI: 10.1016/j.molcel.2015.07.030
5. M. J. Giraud-Panis, M. T. Teixeira, V. Geli and E. Gilson: CST meets shelterin to keep telomeres in check. *Mol Cell*, 39(5), 665-76 (2010)
DOI: 10.1016/j.molcel.2010.08.024
 6. C. Rice and E. Skordalakes: Structure and function of the telomeric CST complex. *Comput Struct Biotechnol J*, 14, 161-7 (2016)
DOI: 10.1016/j.csbj.2016.04.002
 7. A. Bhattacharjee, J. Stewart, M. Chaiken and C. M. Price: STN1 OB Fold Mutation Alters DNA Binding and Affects Selective Aspects of CST Function. *PLoS Genet*, 12(9), e1006342 (2016)
DOI: 10.1371/journal.pgen.1006342
 8. M. Chastain, Q. Zhou, O. Shiva, M. Fadri-Moskwick, L. Whitmore, P. Jia, X. Dai, C. Huang, P. Ye and W. Chai: Human CST Facilitates Genome-wide RAD51 Recruitment to GC-Rich Repetitive Sequences in Response to Replication Stress. *Cell Rep*, 16(7), 2048 (2016)
DOI: 10.1016/j.celrep.2016.08.008
 9. E. Derboven, H. Ekker, B. Kusenda, P. Bulankova and K. Riha: Role of STN1 and DNA polymerase alpha in telomere stability and genome-wide replication in Arabidopsis. *PLoS Genet*, 10(10), e1004682 (2014)
DOI: 10.1371/journal.pgen.1004682
 10. J. A. Stewart, F. Wang, M. F. Chaiken, C. Kasbek, P. D. Chastain, 2nd, W. E. Wright and C. M. Price: Human CST promotes telomere duplex replication and general replication restart after fork stalling. *EMBO J*, 31(17), 3537-49 (2012)
DOI: 10.1038/emboj.2012.215
 11. F. Wang, J. Stewart and C. M. Price: Human CST abundance determines recovery from diverse forms of DNA damage and replication stress. *Cell Cycle*, 13(22), 3488-98 (2014)
DOI: 10.4161/15384101.2014.964100
 12. C. Cayrou, B. Ballester, I. Peiffer, R. Fenouil, P. Coulombe, J. C. Andrau, J. van Helden and M. Mechali: The chromatin environment shapes DNA replication origin organization and defines origin classes. *Genome Res*, 25(12), 1873-85 (2015)
DOI: 10.1101/gr.192799.115
 13. C. Cayrou, P. Coulombe, A. Vigneron, S. Stanojcic, O. Ganier, I. Peiffer, E. Rivals, A. Puy, S. Laurent-Chabalier, R. Desprat and M. Mechali: Genome-scale analysis of metazoan replication origins reveals their organization in specific but flexible sites defined by conserved features. *Genome Res*, 21(9), 1438-49 (2011)
DOI: 10.1101/gr.121830.111
 14. J. C. Siefert, C. Georgescu, J. D. Wren, A. Koren and C. L. Sansam: DNA replication timing during development anticipates transcriptional programs and parallels enhancer activation. *Genome Res* (2017)
DOI: 10.1101/gr.218602.116
 15. M. S. Foulk, J. M. Urban, C. Casella and S. A. Gerbi: Characterizing and controlling intrinsic biases of lambda exonuclease in nascent strand sequencing reveals phasing between nucleosomes and G-quadruplex motifs around a subset of human replication origins. *Genome Res*, 25(5), 725-35 (2015)
DOI: 10.1101/gr.183848.114
 16. M. Fragkos, O. Ganier, P. Coulombe and M. Mechali: DNA replication origin activation in space and time. *Nat Rev Mol Cell Biol*, 16(6), 360-74 (2015)
DOI: 10.1038/nrm4002
 17. M. Yekezare, B. Gomez-Gonzalez and J. F. Diffley: Controlling DNA replication origins in response to DNA damage - inhibit globally, activate locally. *J Cell Sci*, 126(Pt 6), 1297-306 (2013)
DOI: 10.1242/jcs.096701
 18. M. Al Mamun, L. Albergante, A. Moreno, J. T. Carrington, J. J. Blow and T. J. Newman: Inevitability and containment of replication errors for eukaryotic genome lengths spanning megabase to gigabase. *Proc Natl Acad Sci U S A*, 113(39), E5765-74 (2016)
DOI: 10.1073/pnas.1603241113
 19. A. Moreno, J. T. Carrington, L. Albergante, M. Al Mamun, E. J. Haagenen, E. S. Komseli, V. G. Gorgoulis, T. J. Newman and J. J. Blow: Unreplicated DNA remaining from unperturbed S phases passes through mitosis for resolution in daughter cells. *Proc Natl Acad Sci U S A*, 113(39), E5757-64 (2016)
DOI: 10.1073/pnas.1603252113

20. E. Petermann and T. Helleday: Pathways of mammalian replication fork restart. *Nat Rev Mol Cell Biol*, 11(10), 683-7 (2010)
DOI: 10.1038/nrm2974
21. J. A. Stewart, M. F. Chaiken, F. Wang and C. M. Price: Maintaining the end: roles of telomere proteins in end-protection, telomere replication and length regulation. *Mutat Res*, 730(1-2), 12-9 (2012)
DOI: 10.1016/j.mrfmmm.2011.08.011
22. Y. Doksani, J. Y. Wu, T. de Lange and X. Zhuang: Super-resolution fluorescence imaging of telomeres reveals TRF2-dependent T-loop formation. *Cell*, 155(2), 345-356 (2013)
DOI: 10.1016/j.cell.2013.09.048
23. J. D. Griffith, L. Comeau, S. Rosenfield, R. M. Stansel, A. Bianchi, H. Moss and T. de Lange: Mammalian telomeres end in a large duplex loop. *Cell*, 97(4), 503-14 (1999)
DOI: 10.1016/S0092-8674(00)80760-6
24. W. Palm and T. de Lange: How shelterin protects mammalian telomeres. *Annu Rev Genet*, 42, 301-34 (2008)
DOI: 10.1146/annurev.genet.41.110306.130350
25. M. Higa, M. Fujita and K. Yoshida: DNA Replication Origins and Fork Progression at Mammalian Telomeres. *Genes (Basel)*, 8(4) (2017)
DOI: 10.3390/genes8040112
26. P. Martinez and M. A. Blasco: Replicating through telomeres: a means to an end. *Trends Biochem Sci*, 40(9), 504-15 (2015)
DOI: 10.1016/j.tibs.2015.06.003
27. L. Hayflick: The Limited *in vitro* Lifetime of Human Diploid Cell Strains. *Exp Cell Res*, 37, 614-36 (1965)
DOI: 10.1016/0014-4827(65)90211-9
28. J. W. Shay and W. E. Wright: Hayflick, his limit, and cellular ageing. *Nat Rev Mol Cell Biol*, 1(1), 72-6 (2000)
DOI: 10.1038/35036093
29. D. Bonetti, M. Martina, M. Clerici, G. Lucchini and M. P. Longhese: Multiple pathways regulate 3' overhang generation at *S. cerevisiae* telomeres. *Mol Cell*, 35(1), 70-81 (2009)
DOI: 10.1016/j.molcel.2009.05.015
30. E. P. Mimitou and L. S. Symington: DNA end resection--unraveling the tail. *DNA Repair (Amst)*, 10(3), 344-8 (2011)
DOI: 10.1016/j.dnarep.2010.12.004
31. P. Wu, M. van Overbeek, S. Rooney and T. de Lange: Apollo contributes to G overhang maintenance and protects leading-end telomeres. *Mol Cell*, 39(4), 606-17 (2010)
DOI: 10.1016/j.molcel.2010.06.031
32. L. Hayflick and P. S. Moorhead: The serial cultivation of human diploid cell strains. *Exp Cell Res*, 25, 585-621 (1961)
DOI: 10.1016/0014-4827(61)90192-6
33. R. A. Wu, H. E. Upton, J. M. Vogan and K. Collins: Telomerase Mechanism of Telomere Synthesis. *Annu Rev Biochem*, 86, 439-460 (2017)
DOI: 10.1146/annurev-biochem-061516-045019
34. M. G. Ferreira and J. P. Cooper: The fission yeast Taz1 protein protects chromosomes from Ku-dependent end-to-end fusions. *Mol Cell*, 7(1), 55-63 (2001)
DOI: 10.1016/S1097-2765(01)00154-X
35. J. Kanoh and F. Ishikawa: spRap1 and spRif1, recruited to telomeres by Taz1, are essential for telomere function in fission yeast. *Curr Biol*, 11(20), 1624-30 (2001)
DOI: 10.1016/S0960-9822(01)00503-6
36. T. Miyoshi, J. Kanoh, M. Saito and F. Ishikawa: Fission yeast Pot1-Tpp1 protects telomeres and regulates telomere length. *Science*, 320(5881), 1341-4 (2008)
DOI: 10.1126/science.1154819
37. V. Martin, L. L. Du, S. Rozenzhak and P. Russell: Protection of telomeres by a conserved Stn1-Ten1 complex. *Proc Natl Acad Sci U S A*, 104(35), 14038-43 (2007)
DOI: 10.1073/pnas.0705497104
38. C. M. Price, K. A. Boltz, M. F. Chaiken, J. A. Stewart, M. A. Beilstein and D. E. Shippen: Evolution of CST function in telomere maintenance. *Cell Cycle*, 9(16), 3157-65 (2010)
DOI: 10.4161/cc.9.16.12547
39. Y. Miyake, M. Nakamura, A. Nabetani, S. Shimamura, M. Tamura, S. Yonehara, M. Saito and F. Ishikawa: RPA-like mammalian Ctc1-Stn1-Ten1 complex binds to single-stranded DNA and protects telomeres

- independently of the Pot1 pathway. *Mol Cell*, 36(2), 193-206 (2009)
DOI: 10.1016/j.molcel.2009.08.009
40. Y. V. Surovtseva, D. Churikov, K. A. Boltz, X. Song, J. C. Lamb, R. Warrington, K. Leehy, M. Heacock, C. M. Price and D. E. Shippen: Conserved telomere maintenance component 1 interacts with STN1 and maintains chromosome ends in higher eukaryotes. *Mol Cell*, 36(2), 207-18 (2009)
DOI: 10.1016/j.molcel.2009.09.017
 41. X. Song, K. Leehy, R. T. Warrington, J. C. Lamb, Y. V. Surovtseva and D. E. Shippen: STN1 protects chromosome ends in *Arabidopsis thaliana*. *Proc Natl Acad Sci U S A*, 105(50), 19815-20 (2008)
DOI: 10.1073/pnas.0807867105
 42. J. Sun, E. Y. Yu, Y. Yang, L. A. Confer, S. H. Sun, K. Wan, N. F. Lue and M. Lei: Stn1-Ten1 is an Rpa2-Rpa3-like complex at telomeres. *Genes Dev*, 23(24), 2900-14 (2009)
DOI: 10.1101/gad.1851909
 43. H. Nakaoka, A. Nishiyama, M. Saito and F. Ishikawa: *Xenopus laevis* Ctc1-Stn1-Ten1 (xCST) protein complex is involved in priming DNA synthesis on single-stranded DNA template in *Xenopus* egg extract. *J Biol Chem*, 287(1), 619-27 (2012)
DOI: 10.1074/jbc.M111.263723
 44. B. Wan, T. Tang, H. Upton, J. Shuai, Y. Zhou, S. Li, J. Chen, J. S. Brunzelle, Z. Zeng, K. Collins, J. Wu and M. Lei: The *Tetrahymena* telomerase p75-p45-p19 subcomplex is a unique CST complex. *Nat Struct Mol Biol*, 22(12), 1023-6 (2015)
DOI: 10.1038/nsmb.3126
 45. B. A. Moser and T. M. Nakamura: Protection and replication of telomeres in fission yeast. *Biochem Cell Biol*, 87(5), 747-58 (2009)
DOI: 10.1139/O09-037
 46. M. P. Horvath: Structural anatomy of telomere OB proteins. *Crit Rev Biochem Mol Biol*, 46(5), 409-35 (2011)
DOI: 10.3109/10409238.2011.609295
 47. D. L. Theobald, R. M. Mitton-Fry and D. S. Wuttke: Nucleic acid recognition by OB-fold proteins. *Annu Rev Biophys Biomol Struct*, 32, 115-33 (2003)
DOI: 10.1146/annurev.biophys.32.110601.142506
 48. K. A. Lewis, D. A. Pfaff, J. N. Earley, S. E. Altschuler and D. S. Wuttke: The tenacious recognition of yeast telomere sequence by Cdc13 is fully exerted by a single OB-fold domain. *Nucleic Acids Res*, 42(1), 475-84 (2014)
DOI: 10.1093/nar/gkt843
 49. M. Mason, J. J. Wanat, S. Harper, D. C. Schultz, D. W. Speicher, F. B. Johnson and E. Skordalakes: Cdc13 OB2 dimerization required for productive Stn1 binding and efficient telomere maintenance. *Structure*, 21(1), 109-20 (2013)
DOI: 10.1016/j.str.2012.10.012
 50. E. Y. Yu, J. Sun, M. Lei and N. F. Lue: Analyses of *Candida* Cdc13 orthologues revealed a novel OB fold dimer arrangement, dimerization-assisted DNA binding, and substantial structural differences between Cdc13 and RPA70. *Mol Cell Biol*, 32(1), 186-98 (2012)
DOI: 10.1128/MCB.05875-11
 51. T. R. Hughes, R. G. Weilbaecher, M. Walterscheid and V. Lundblad: Identification of the single-strand telomeric DNA binding domain of the *Saccharomyces cerevisiae* Cdc13 protein. *Proc Natl Acad Sci U S A*, 97(12), 6457-62 (2000)
DOI: 10.1073/pnas.97.12.6457
 52. H. Y. Qi and V. A. Zakian: The *Saccharomyces* telomere-binding protein Cdc13p interacts with both the catalytic subunit of DNA polymerase alpha and the telomerase-associated Est1 protein. *Genes & Development*, 14(14), 1777-1788 (2000)
 53. J. Sun, Y. Yang, K. Wan, N. Mao, T. Y. Yu, Y. C. Lin, D. C. DeZwaan, B. C. Freeman, J. J. Lin, N. F. Lue and M. Lei: Structural bases of dimerization of yeast telomere protein Cdc13 and its interaction with the catalytic subunit of DNA polymerase alpha. *Cell Res*, 21(2), 258-74 (2011)
DOI: 10.1038/cr.2010.138
 54. C. Bryan, C. Rice, M. Harkisheimer, D. C. Schultz and E. Skordalakes: Structure of the human telomeric Stn1-Ten1 capping complex. *PLoS One*, 8(6), e66756 (2013)
DOI: 10.1371/journal.pone.0066756
 55. X. Deng, J. E. Habel, V. Kabaleeswaran, E. H. Snell, M. S. Wold and G. E. Borgstahl: Structure of the full-length human RPA14/32

- complex gives insights into the mechanism of DNA binding and complex formation. *J Mol Biol*, 374(4), 865-76 (2007)
DOI: 10.1016/j.jmb.2007.09.074
56. R. Chen and M. S. Wold: Replication protein A: single-stranded DNA's first responder: dynamic DNA-interactions allow replication protein A to direct single-strand DNA intermediates into different pathways for synthesis or repair. *Bioessays*, 36(12), 1156-61 (2014)
DOI: 10.1002/bies.201400107
 57. E. Fanning, V. Klimovich and A. R. Nager: A dynamic model for replication protein A (RPA) function in DNA processing pathways. *Nucleic Acids Res*, 34(15), 4126-37 (2006)
DOI: 10.1093/nar/gkl550
 58. M. S. Wold: Replication protein A: a heterotrimeric, single-stranded DNA-binding protein required for eukaryotic DNA metabolism. *Annu Rev Biochem*, 66, 61-92 (1997)
DOI: 10.1146/annurev.biochem.66.1.61
 59. D. E. Casteel, S. Zhuang, Y. Zeng, F. W. Perrino, G. R. Boss, M. Goulian and R. B. Pilz: A DNA polymerase- α primase cofactor with homology to replication protein A-32 regulates DNA replication in mammalian cells. *J Biol Chem*, 284(9), 5807-18 (2009)
DOI: 10.1074/jbc.M807593200
 60. H. Gao, R. B. Cervantes, E. K. Mandell, J. H. Otero and V. Lundblad: RPA-like proteins mediate yeast telomere function. *Nat Struct Mol Biol*, 14(3), 208-14 (2007)
DOI: 10.1038/nsmb1205
 61. M. Paschini, E. K. Mandell and V. Lundblad: Structure prediction-driven genetics in *Saccharomyces cerevisiae* identifies an interface between the t-RPA proteins Stn1 and Ten1. *Genetics*, 185(1), 11-21 (2010)
DOI: 10.1534/genetics.109.111922
 62. A. Bhattacharjee, Y. Wang, J. Diao and C. M. Price: Dynamic DNA binding, junction recognition and G4 melting activity underlie the telomeric and genome-wide roles of human CST. *Nucleic Acids Res* (2017)
DOI: 10.1093/nar/gkx878
 63. R. A. Hom and D. S. Wuttke: Human CST prefers G-rich but not necessarily telomeric sequences. *Biochemistry* (2017)
DOI: 10.1021/acs.biochem.7b00584
 64. J. J. Lin and V. A. Zakian: The *Saccharomyces* CDC13 protein is a single-strand TG1-3 telomeric DNA-binding protein in vitro that affects telomere behavior in vivo. *Proc Natl Acad Sci U S A*, 93(24), 13760-5 (1996)
DOI: 10.1073/pnas.93.24.13760
 65. C. I. Nugent, T. R. Hughes, N. F. Lue and V. Lundblad: Cdc13p: a single-strand telomeric DNA-binding protein with a dual role in yeast telomere maintenance. *Science*, 274(5285), 249-52 (1996)
DOI: 10.1126/science.274.5285.249
 66. E. K. Mandell, A. D. Gelinas, D. S. Wuttke and V. Lundblad: Sequence-specific binding to telomeric DNA is not a conserved property of the Cdc13 DNA binding domain. *Biochemistry*, 50(29), 6289-91 (2011)
DOI: 10.1021/bi2005448
 67. N. F. Lue, R. Zhou, L. Chico, N. Mao, O. Steinberg-Neifach and T. Ha: The telomere capping complex CST has an unusual stoichiometry, makes multipartite interaction with G-Tails, and unfolds higher-order G-tail structures. *PLoS Genet*, 9(1), e1003145 (2013)
DOI: 10.1371/journal.pgen.1003145
 68. C. J. Ma, B. Gibb, Y. Kwon, P. Sung and E. C. Greene: Protein dynamics of human RPA and RAD51 on ssDNA during assembly and disassembly of the RAD51 filament. *Nucleic Acids Res*, 45(2), 749-761 (2017)
DOI: 10.1093/nar/gkw1125
 69. N. Pokhrel, S. Origanti, E. P. Davenport, D. Gandhi, K. Kaniecki, R. A. Mehl, E. C. Greene, C. Dockendorff and E. Antony: Monitoring Replication Protein A (RPA) dynamics in homologous recombination through site-specific incorporation of non-canonical amino acids. *Nucleic Acids Res*, 45(16), 9413-9426 (2017)
DOI: 10.1093/nar/gkx598
 70. M. Goulian and C. J. Heard: The mechanism of action of an accessory protein for DNA polymerase α /primase. *J Biol Chem*, 265(22), 13231-9 (1990)
 71. M. Goulian, C. J. Heard and S. L. Grimm: Purification and properties of an accessory protein for DNA polymerase α /primase. *J Biol Chem*, 265(22), 13221-30 (1990)
 72. L. Y. Chen, J. Majerska and J. Lingner: Molecular basis of telomere syndrome

- caused by CTC1 mutations. *Genes Dev*, 27(19), 2099-108 (2013)
DOI: 10.1101/gad.222893.113
73. C. Van, S. Yan, W. M. Michael, S. Waga and K. A. Cimprich: Continued primer synthesis at stalled replication forks contributes to checkpoint activation. *J Cell Biol*, 189(2), 233-46 (2010)
DOI: 10.1083/jcb.200909105
74. N. F. Lue, J. Chan, W. E. Wright and J. Hurwitz: The CDC13-STN1-TEN1 complex stimulates Pol alpha activity by promoting RNA priming and primase-to-polymerase switch. *Nat Commun*, 5, 5762 (2014)
DOI: 10.1038/ncomms6762
75. S. Ganduri and N. F. Lue: STN1-POLA2 interaction provides a basis for primase-pol alpha stimulation by human STN1. *Nucleic Acids Res*, 45(16), 9455-9466 (2017)
DOI: 10.1093/nar/gkx621
76. B. Garvik, M. Carson and L. Hartwell: Single-stranded DNA arising at telomeres in cdc13 mutants may constitute a specific signal for the RAD9 checkpoint (published erratum appears in *Mol Cell Biol* 1996 Jan;16(1):457). *Mol Cell Biol*, 15(11), 6128-38 (1995)
DOI: 10.1128/MCB.15.11.6128
77. N. Grandin, C. Damon and M. Charbonneau: Ten1 functions in telomere end protection and length regulation in association with Stn1 and Cdc13. *EMBO J*, 20(5), 1173-83 (2001)
DOI: 10.1093/emboj/20.5.1173
78. N. Grandin, S. I. Reed and M. Charbonneau: Stn1, a new *Saccharomyces cerevisiae* protein, is implicated in telomere size regulation in association with Cdc13. *Genes & Development*, 11(4), 512-527 (1997)
DOI: 10.1101/gad.11.4.512
79. K. A. Leehy, J. R. Lee, X. Song, K. B. Renfrew and D. E. Shippen: MERISTEM DISORGANIZATION1 encodes TEN1, an essential telomere protein that modulates telomerase processivity in Arabidopsis. *Plant Cell*, 25(4), 1343-54 (2013)
DOI: 10.1105/tpc.112.107425
80. K. A. Boltz, K. Leehy, X. Song, A. D. Nelson and D. E. Shippen: ATR cooperates with CTC1 and STN1 to maintain telomeres and genome integrity in Arabidopsis. *Mol Biol Cell*, 23(8), 1558-68 (2012)
DOI: 10.1091/mbc.E11-12-1002
81. P. Gu, J. N. Min, Y. Wang, C. Huang, T. Peng, W. Chai and S. Chang: CTC1 deletion results in defective telomere replication, leading to catastrophic telomere loss and stem cell exhaustion. *EMBO J*, 31(10), 2309-21 (2012)
DOI: 10.1038/emboj.2012.96
82. X. Feng, S. J. Hsu, C. Kasbek, M. Chaiken and C. M. Price: CTC1-mediated C-strand fill-in is an essential step in telomere length maintenance. *Nucleic Acids Res*, 45(8), 4281-4293 (2017)
DOI: 10.1093/nar/gkx125
83. X. Dai, C. Huang, A. Bhusari, S. Sampathi, K. Schubert and W. Chai: Molecular steps of G-overhang generation at human telomeres and its function in chromosome end protection. *EMBO J*, 29(16), 2788-801 (2010)
DOI: 10.1038/emboj.2010.156
84. C. Huang, X. Dai and W. Chai: Human Stn1 protects telomere integrity by promoting efficient lagging-strand synthesis at telomeres and mediating C-strand fill-in. *Cell Res*, 22(12), 1681-95 (2012)
DOI: 10.1038/cr.2012.132
85. C. Kasbek, F. Wang and C. M. Price: Human TEN1 maintains telomere integrity and functions in genome-wide replication restart. *J Biol Chem*, 288(42), 30139-50 (2013)
DOI: 10.1074/jbc.M113.493478
86. V. Boccardi, N. Razdan, J. Kaplunov, J. J. Mundra, M. Kimura, A. Aviv and U. Herbig: Stn1 is critical for telomere maintenance and long-term viability of somatic human cells. *Aging Cell*, 14(3), 372-81 (2015)
DOI: 10.1111/accel.12289
87. Y. Wang, Q. Xu, L. Sack, C. Kang and S. J. Elledge: A gain-of-function senescence bypass screen identifies the homeobox transcription factor DLX2 as a regulator of ATM-p53 signaling. *Genes Dev*, 30(3), 293-306 (2016)
DOI: 10.1101/gad.271445.115
88. C. M. Beausejour, A. Krtolica, F. Galimi, M. Narita, S. W. Lowe, P. Yaswen and J. Campisi: Reversal of human cellular

- senescence: roles of the p53 and p16 pathways. *EMBO J*, 22(16), 4212-22 (2003)
DOI: 10.1093/emboj/cdg417
89. J. Sage, A. L. Miller, P. A. Perez-Mancera, J. M. Wysocki and T. Jacks: Acute mutation of retinoblastoma gene function is sufficient for cell cycle re-entry. *Nature*, 424(6945), 223-8 (2003)
DOI: 10.1038/nature01764
 90. A. J. Simon, A. Lev, Y. Zhang, B. Weiss, A. Rylova, E. Eyal, N. Kol, O. Barel, K. Cesarkas, M. Soudack, N. Greenberg-Kushnir, M. Rhodes, D. L. Wiest, G. Schiby, I. Barshack, S. Katz, E. Pras, H. Poran, H. Reznik-Wolf, E. Ribakovsky, C. Simon, W. Hazou, Y. Sidi, A. Lahad, H. Katzir, S. Sagie, H. A. Aqeilan, G. Glouster, N. Amariglio, Y. Tzfati, S. Selig, G. Rechavi and R. Somech: Mutations in STN1 cause Coats plus syndrome and are associated with genomic and telomere defects. *J Exp Med*, 213(8), 1429-40 (2016)
DOI: 10.1084/jem.20151618
 91. F. Wang, J. A. Stewart, C. Kasbek, Y. Zhao, W. E. Wright and C. M. Price: Human CST has independent functions during telomere duplex replication and C-strand fill-in. *Cell Rep*, 2(5), 1096-103 (2012)
DOI: 10.1016/j.celrep.2012.10.007
 92. L. Y. Chen, S. Redon and J. Lingner: The human CST complex is a terminator of telomerase activity. *Nature*, 488(7412), 540-4 (2012)
DOI: 10.1038/nature11269
 93. A. Chandra, T. R. Hughes, C. I. Nugent and V. Lundblad: Cdc13 both positively and negatively regulates telomere replication. *Genes Dev*, 15(4), 404-14 (2001)
DOI: 10.1101/gad.861001
 94. E. Pennock, K. Buckley and V. Lundblad: Cdc13 delivers separate complexes to the telomere for end protection and replication. *Cell*, 104(3), 387-96 (2001)
DOI: 10.1016/S0092-8674(01)00226-4
 95. V. Gopalakrishnan, C. R. Tan and S. Li: Sequential phosphorylation of CST subunits by different cyclin-Cdk1 complexes orchestrate telomere replication. *Cell Cycle*, 16(13), 1271-1287 (2017)
DOI: 10.1080/15384101.2017.1312235
 96. S. F. Tseng, J. J. Lin and S. C. Teng: The telomerase-recruitment domain of the telomere binding protein Cdc13 is regulated by Mec1p/Tel1p-dependent phosphorylation. *Nucleic Acids Res*, 34(21), 6327-36 (2006)
DOI: 10.1093/nar/gkl786
 97. Z. J. Shen, P. H. Hsu, Y. T. Su, C. W. Yang, L. Kao, S. F. Tseng, M. D. Tsai and S. C. Teng: PP2A and Aurora differentially modify Cdc13 to promote telomerase release from telomeres at G2/M phase. *Nat Commun*, 5, 5312 (2014)
DOI: 10.1038/ncomms6312
 98. L. E. Hang, X. Liu, I. Cheung, Y. Yang and X. Zhao: SUMOylation regulates telomere length homeostasis by targeting Cdc13. *Nat Struct Mol Biol*, 18(8), 920-6 (2011)
DOI: 10.1038/nsmb.2100
 99. M. Wan, J. Qin, Z. Songyang and D. Liu: OB fold-containing protein 1 (OBFC1), a human homolog of yeast Stn1, associates with TPP1 and is implicated in telomere length regulation. *J Biol Chem*, 284(39), 26725-31 (2009)
DOI: 10.1074/jbc.M109.021105
 100. E. Abreu, E. Aritonovska, P. Reichenbach, G. Cristofari, B. Culp, R. M. Terns, J. Lingner and M. P. Terns: TIN2-tethered TPP1 recruits human telomerase to telomeres in vivo. *Mol Cell Biol*, 30(12), 2971-82 (2010)
DOI: 10.1128/MCB.00240-10
 101. A. M. Tejera, M. Stagno d'Alcontres, M. Thanasoula, R. M. Marion, P. Martinez, C. Liao, J. M. Flores, M. Tarsounas and M. A. Blasco: TPP1 is required for TERT recruitment, telomere elongation during nuclear reprogramming, and normal skin development in mice. *Dev Cell*, 18(5), 775-89 (2010)
DOI: 10.1016/j.devcel.2010.03.011
 102. J. Nandakumar, C. F. Bell, I. Weidenfeld, A. J. Zaug, L. A. Leinwand and T. R. Cech: The TEL patch of telomere protein TPP1 mediates telomerase recruitment and processivity. *Nature*, 492(7428), 285-9 (2012)
DOI: 10.1038/nature11648
 103. P. Wu, H. Takai and T. de Lange: Telomeric 3' overhangs derive from resection by Exo1 and Apollo and fill-in by POT1b-associated CST. *Cell*, 150(1), 39-52 (2012)
DOI: 10.1016/j.cell.2012.05.026
 104. F. L. Zhong, L. F. Batista, A. Freund, M. F. Pech, A. S. Venteicher and S. E. Artandi:

- TPP1 OB-fold domain controls telomere maintenance by recruiting telomerase to chromosome ends. *Cell*, 150(3), 481-94 (2012)
DOI: 10.1016/j.cell.2012.07.012
105. J. Nandakumar and T. R. Cech: Finding the end: recruitment of telomerase to telomeres. *Nat Rev Mol Cell Biol*, 14(2), 69-82 (2013)
DOI: 10.1038/nrm3505
106. L. Y. Chen and J. Lingner: CST for the grand finale of telomere replication. *Nucleus*, 4(4), 277-82 (2013)
DOI: 10.4161/nucl.25701
107. M. Garg, R. L. Gurung, S. Mansoubi, J. O. Ahmed, A. Dave, F. Z. Watts and A. Bianchi: Tpz1TPP1 SUMOylation reveals evolutionary conservation of SUMO-dependent Stn1 telomere association. *EMBO Rep*, 15(8), 871-7 (2014)
DOI: 10.15252/embr.201438919
108. K. Miyagawa, R. S. Low, V. Santosa, H. Tsuji, B. A. Moser, S. Fujisawa, J. L. Harland, O. N. Raguimova, A. Go, M. Ueno, A. Matsuyama, M. Yoshida, T. M. Nakamura and K. Tanaka: SUMOylation regulates telomere length by targeting the shelterin subunit Tpz1(Tpp1) to modulate shelterin-Stn1 interaction in fission yeast. *Proc Natl Acad Sci U S A*, 111(16), 5950-5 (2014)
DOI: 10.1073/pnas.1401359111
109. Y. Hirai, M. Tamura, J. Otani and F. Ishikawa: NEK6-mediated phosphorylation of human TPP1 regulates telomere length through telomerase recruitment. *Genes Cells*, 21(8), 874-89 (2016)
DOI: 10.1111/gtc.12391
110. Y. Zhang, L. Y. Chen, X. Han, W. Xie, H. Kim, D. Yang, D. Liu and Z. Songyang: Phosphorylation of TPP1 regulates cell cycle-dependent telomerase recruitment. *Proc Natl Acad Sci U S A*, 110(14), 5457-62 (2013)
DOI: 10.1073/pnas.1217733110
111. W. C. Drosopoulos, S. T. Kosiyatrakul and C. L. Schildkraut: BLM helicase facilitates telomere replication during leading strand synthesis of telomeres. *J Cell Biol*, 210(2), 191-208 (2015)
DOI: 10.1083/jcb.201410061
112. A. Sfeir, S. T. Kosiyatrakul, D. Hockemeyer, S. L. MacRae, J. Karlseder, C. L. Schildkraut and T. de Lange: Mammalian telomeres resemble fragile sites and require TRF1 for efficient replication. *Cell*, 138(1), 90-103 (2009)
DOI: 10.1016/j.cell.2009.06.021
113. P. Martinez, M. Thanasoula, P. Munoz, C. Liao, A. Tejera, C. McNees, J. M. Flores, O. Fernandez-Capetillo, M. Tarsounas and M. A. Blasco: Increased telomere fragility and fusions resulting from TRF1 deficiency lead to degenerative pathologies and increased cancer in mice. *Genes Dev*, 23(17), 2060-75 (2009)
DOI: 10.1101/gad.543509
114. A. Saharia, D. C. Teasley, J. P. Duxin, B. Dao, K. B. Chiappinelli and S. A. Stewart: FEN1 ensures telomere stability by facilitating replication fork re-initiation. *J Biol Chem*, 285(35), 27057-66 (2010)
DOI: 10.1074/jbc.M110.112276
115. L. J. Barber, J. L. Youds, J. D. Ward, M. J. McIlwraith, N. J. O'Neil, M. I. Petalcorin, J. S. Martin, S. J. Collis, S. B. Cantor, M. Auclair, H. Tissenbaum, S. C. West, A. M. Rose and S. J. Boulton: RTEL1 maintains genomic stability by suppressing homologous recombination. *Cell*, 135(2), 261-71 (2008)
DOI: 10.1016/j.cell.2008.08.016
116. M. Takikawa, Y. Tarumoto and F. Ishikawa: Fission yeast Stn1 is crucial for semi-conservative replication at telomeres and subtelomeres. *Nucleic Acids Res*, 45(3), 1255-1269 (2017)
DOI: 10.1093/nar/gkw1176
117. H. J. Gasparyan, L. Xu, R. C. Petreaca, A. E. Rex, V. Y. Small, N. S. Bhogal, J. A. Julius, T. H. Warsi, J. Bachant, O. M. Aparicio and C. I. Nugent: Yeast telomere capping protein Stn1 overrides DNA replication control through the S phase checkpoint. *Proc Natl Acad Sci U S A*, 106(7), 2206-11 (2009)
DOI: 10.1073/pnas.0812605106
118. B. M. Sirbu, W. H. McDonald, H. Dugrawala, A. Badu-Nkansah, G. M. Kavanaugh, Y. Chen, D. L. Tabb and D. Cortez: Identification of proteins at active, stalled, and collapsed replication forks using isolation of proteins on nascent DNA (iPOND) coupled with mass spectrometry. *J Biol Chem*, 288(44), 31458-67 (2013)
DOI: 10.1074/jbc.M113.511337
119. F. Antequera and A. Bird: CpG islands as genomic footprints of promoters that are

- associated with replication origins. *Curr Biol*, 9(17), R661-7 (1999)
DOI: 10.1016/S0960-9822(99)80418-7
120. R. Lombrana, R. Almeida, A. Alvarez and M. Gomez: R-loops and initiation of DNA replication in human cells: a missing link? *Front Genet*, 6, 158 (2015)
DOI: 10.3389/fgene.2015.00158
121. A. M. Kolinjivadi, V. Sannino, A. de Antoni, H. Techer, G. Baldi and V. Costanzo: Moonlighting at replication forks - a new life for homologous recombination proteins BRCA1, BRCA2 and RAD51. *FEBS Lett*, 591(8), 1083-1100 (2017)
DOI: 10.1002/1873-3468.12556
122. J. San Filippo, P. Sung and H. Klein: Mechanism of eukaryotic homologous recombination. *Annu Rev Biochem*, 77, 229-57 (2008)
DOI: 10.1146/annurev.biochem.77.061306.125255
123. J. J. Blow, X. Q. Ge and D. A. Jackson: How dormant origins promote complete genome replication. *Trends Biochem Sci*, 36(8), 405-14 (2011)
DOI: 10.1016/j.tibs.2011.05.002
124. X. Q. Ge, D. A. Jackson and J. J. Blow: Dormant origins licensed by excess Mcm2-7 are required for human cells to survive replicative stress. *Genes Dev*, 21(24), 3331-41 (2007)
DOI: 10.1101/gad.457807
125. M. Fragkos and V. Naim: Rescue from replication stress during mitosis. *Cell Cycle*, 16(7), 613-633 (2017)
DOI: 10.1080/15384101.2017.1288322
126. C. Gelot, I. Magdalou and B. S. Lopez: Replication stress in Mammalian cells and its consequences for mitosis. *Genes (Basel)*, 6(2), 267-98 (2015)
DOI: 10.3390/genes6020267
127. A. Ait Saada, A. Teixeira-Silva, I. Iraqui, A. Costes, J. Hardy, G. Paoletti, K. Freon and S. A. E. Lambert: Unprotected Replication Forks Are Converted into Mitotic Sister Chromatid Bridges. *Mol Cell*, 66(3), 398-410 e4 (2017)
128. C. Lukas, V. Savic, S. Bekker-Jensen, C. Doil, B. Neumann, R. S. Pedersen, M. Grofte, K. L. Chan, I. D. Hickson, J. Bartek and J. Lukas: 53BP1 nuclear bodies form around DNA lesions generated by mitotic transmission of chromosomes under replication stress. *Nat Cell Biol*, 13(3), 243-53 (2011)
DOI: 10.1038/ncb2201
129. T. A. Briggs, G. M. Abdel-Salam, M. Balicki, P. Baxter, E. Bertini, N. Bishop, B. H. Browne, D. Chitayat, W. K. Chong, M. M. Eid, W. Halliday, I. Hughes, A. Klusmann-Koy, M. Kurian, K. K. Nischal, G. I. Rice, J. B. Stephenson, R. Surtees, J. F. Talbot, N. N. Tehrani, J. L. Tolmie, C. Toomes, M. S. van der Knaap and Y. J. Crow: Cerebroretinal microangiopathy with calcifications and cysts (CRMCC). *Am J Med Genet A*, 146A(2), 182-90 (2008)
DOI: 10.1002/ajmg.a.32080
130. T. Linnankivi, L. Valanne, A. Paetau, I. Alafuzoff, J. M. Hakumaki, T. Kivela, T. Lonnqvist, O. Makitie, L. Paakkonen, L. Vainionpaa, R. Vanninen, R. Herva and H. Pihko: Cerebroretinal microangiopathy with calcifications and cysts. *Neurology*, 67(8), 1437-43 (2006)
DOI: 10.1212/01.wnl.0000236999.63933.b0
131. B. H. Anderson, P. R. Kasher, J. Mayer, M. Szykiewicz, E. M. Jenkinson, S. S. Bhaskar, J. E. Urquhart, S. B. Daly, J. E. Dickerson, J. O'Sullivan, E. O. Leibundgut, J. Muter, G. M. Abdel-Salem, R. Babul-Hirji, P. Baxter, A. Berger, L. Bonafe, J. E. Brunstom-Hernandez, J. A. Buckard, D. Chitayat, W. K. Chong, D. M. Cordelli, P. Ferreira, J. Fluss, E. H. Forrest, E. Franzoni, C. Garone, S. R. Hammans, G. Houge, I. Hughes, S. Jacquemont, P. Y. Jeannet, R. J. Jefferson, R. Kumar, G. Kutschke, S. Lundberg, C. M. Lourenco, R. Mehta, S. Naidu, K. K. Nischal, L. Nunes, K. Ounap, M. Philippart, P. Prabhakar, S. R. Risen, R. Schiffmann, C. Soh, J. B. Stephenson, H. Stewart, J. Stone, J. L. Tolmie, M. S. van der Knaap, J. P. Vieira, C. N. Vilain, E. L. Wakeling, V. Wermenbol, A. Whitney, S. C. Lovell, S. Meyer, J. H. Livingston, G. M. Baerlocher, G. C. Black, G. I. Rice and Y. J. Crow: Mutations in CTC1, encoding conserved telomere maintenance component 1, cause Coats plus. *Nat Genet*, 44(3), 338-42 (2012)
DOI: 10.1038/ng.1084
132. A. Polvi, T. Linnankivi, T. Kivela, R. Herva, J. P. Keating, O. Makitie, D. Pareyson, L. Vainionpaa, J. Lahtinen, I. Hovatta, H. Pihko and A. E. Lehesjoki: Mutations

- in CTC1, encoding the CTS telomere maintenance complex component 1, cause cerebrotelomeric microangiopathy with calcifications and cysts. *Am J Hum Genet*, 90(3), 540-9 (2012)
DOI: 10.1016/j.ajhg.2012.02.002
133. A. Bisserbe, G. Tertian, C. Buffet, A. Turhan, O. Lambotte, G. Nasser, P. Alvin, M. Tardieu, F. Riant, F. Bergametti, E. Tournier-Lasserre and C. Denier: Cerebrotelomeric microangiopathy with calcifications and cysts due to recessive mutations in the CTC1 gene. *Rev Neurol (Paris)*, 171(5), 445-9 (2015)
DOI: 10.1016/j.neurol.2015.01.566
134. M. Netravathi, R. Kumari, S. Kapoor, P. Dakle, M. K. Dwivedi, S. D. Roy, P. Pandey, J. Saini, A. Ramakrishna, D. Navalli, P. Satishchandra, P. K. Pal, A. Kumar and M. Faruq: Whole exome sequencing in an Indian family links Coats plus syndrome and dextrocardia with a homozygous novel CTC1 and a rare HES7 variation. *BMC Med Genet*, 16, 5 (2015)
DOI: 10.1186/s12881-015-0151-8
135. R. Romaniello, F. Arrigoni, A. Citterio, A. Tonelli, C. Sforzini, C. Rizzari, M. Pessina, F. Triulzi, M. T. Bassi and R. Borgatti: Cerebrotelomeric microangiopathy with calcifications and cysts associated with CTC1 and NDP mutations. *J Child Neurol*, 28(12), 1702-8 (2013)
DOI: 10.1177/0883073812467849
136. H. Takai, E. Jenkinson, S. Kabir, R. Babul-Hirji, N. Najm-Tehrani, D. A. Chitayat, Y. J. Crow and T. de Lange: A POT1 mutation implicates defective telomere end fill-in and telomere truncations in Coats plus. *Genes Dev*, 30(7), 812-26 (2016)
DOI: 10.1101/gad.276873.115
137. R. B. Keller, K. E. Gagne, G. N. Usmani, G. K. Asdourian, D. A. Williams, I. Hofmann and S. Agarwal: CTC1 Mutations in a patient with dyskeratosis congenita. *Pediatr Blood Cancer*, 59(2), 311-4 (2012)
DOI: 10.1002/pbc.24193
138. A. J. Walne, T. Bhagat, M. Kirwan, C. Gitiaux, I. Desguerre, N. Leonard, E. Nogales, T. Vulliamy and I. S. Dokal: Mutations in the telomere capping complex in bone marrow failure and related syndromes. *Haematologica*, 98(3), 334-8 (2013)
DOI: 10.3324/haematol.2012.071068
139. B. Holohan, W. E. Wright and J. W. Shay: Cell biology of disease: Telomeropathies: an emerging spectrum disorder. *J Cell Biol*, 205(3), 289-99 (2014)
DOI: 10.1083/jcb.201401012
140. N. D. Nelson and A. A. Bertuch: Dyskeratosis congenita as a disorder of telomere maintenance. *Mutat Res*, 730(1-2), 43-51 (2012)
DOI: 10.1016/j.mrfmmm.2011.06.008
141. S. E. Stanley and M. Armanios: The short and long telomere syndromes: paired paradigms for molecular medicine. *Curr Opin Genet Dev*, 33, 1-9 (2015)
DOI: 10.1016/j.gde.2015.06.004
142. M. Armanios and E. H. Blackburn: The telomere syndromes. *Nat Rev Genet*, 13(10), 693-704 (2012)
DOI: 10.1038/nrg3246
143. P. Gu and S. Chang: Functional characterization of human CTC1 mutations reveals novel mechanisms responsible for the pathogenesis of the telomere disease Coats plus. *Aging Cell*, 12(6), 1100-9 (2013)
DOI: 10.1111/acer.12139
144. A. Y. Angstadt, V. Thayanithy, S. Subramanian, J. F. Modiano and M. Breen: A genome-wide approach to comparative oncology: high-resolution oligonucleotide aCGH of canine and human osteosarcoma pinpoints shared microaberrations. *Cancer Genet*, 205(11), 572-87 (2012)
DOI: 10.1016/j.cancer.2012.09.005
145. Y. M. Luo, N. X. Xia, L. Yang, Z. Li, H. Yang, H. J. Yu, Y. Liu, H. Lei, F. X. Zhou, C. H. Xie and Y. F. Zhou: CTC1 increases the radioresistance of human melanoma cells by inhibiting telomere shortening and apoptosis. *Int J Mol Med*, 33(6), 1484-90 (2014)
DOI: 10.3892/ijmm.2014.1721
146. A. M. Pinzaru, R. A. Hom, A. Beal, A. F. Phillips, E. Ni, T. Cardozo, N. Nair, J. Choi, D. S. Wuttke, A. Sfeir and E. L. Denchi: Telomere Replication Stress Induced by POT1 Inactivation Accelerates Tumorigenesis. *Cell Rep*, 15(10), 2170-84 (2016)
DOI: 10.1016/j.celrep.2016.05.008
147. B. Györfy, P. Surowiak, J. Budczies and A. Lanczky: Online survival analysis software to assess the prognostic value of biomarkers using transcriptomic data in non-small-

- cell lung cancer. *PLoS One*, 8(12), e82241 (2013)
DOI: 10.1371/journal.pone.0082241
148. D. Levy, S. L. Neuhausen, S. C. Hunt, M. Kimura, S. J. Hwang, W. Chen, J. C. Bis, A. L. Fitzpatrick, E. Smith, A. D. Johnson, J. P. Gardner, S. R. Srinivasan, N. Schork, J. I. Rotter, U. Herbig, B. M. Psaty, M. Sastrasin, S. S. Murray, R. S. Vasan, M. A. Province, N. L. Glazer, X. Lu, X. Cao, R. Kronmal, M. Mangino, N. Soranzo, T. D. Spector, G. S. Berenson and A. Aviv: Genome-wide association identifies OBFC1 as a locus involved in human leukocyte telomere biology. *Proc Natl Acad Sci U S A*, 107(20), 9293-8 (2010)
DOI: 10.1073/pnas.0911494107
149. K. M. Walsh, V. Codd, T. Rice, C. P. Nelson, I. V. Smirnov, L. S. McCoy, H. M. Hansen, E. Elhauge, J. Ojha, S. S. Francis, N. R. Madsen, P. M. Bracci, A. R. Pico, A. M. Molinaro, T. Tihan, M. S. Berger, S. M. Chang, M. D. Prados, R. B. Jenkins, J. L. Wiemels, E. C. T. Group, N. J. Samani, J. K. Wiencke and M. R. Wrensch: Longer genotypically-estimated leukocyte telomere length is associated with increased adult glioma risk. *Oncotarget*, 6(40), 42468-77 (2015)
DOI: 10.18632/oncotarget.6468
150. J. Gudmundsson, G. Thorleifsson, J. K. Sigurdsson, L. Stefansdottir, J. G. Jonasson, S. A. Gudjonsson, D. F. Gudbjartsson, G. Masson, H. Johannsdottir, G. H. Halldorsson, S. N. Stacey, H. Helgason, P. Sulem, L. Senter, H. He, S. Liyanarachchi, M. D. Ringel, E. Aguillo, A. Panadero, E. Prats, A. Garcia-Castano, A. De Juan, F. Rivera, L. Xu, L. A. Kiemeny, G. I. Eyjolfsson, O. Sigurdardottir, I. Olafsson, H. Kristvinsson, R. T. Netea-Maier, T. Jonsson, J. I. Mayordomo, T. S. Plantinga, H. Hjartarson, J. Hrafnkelsson, E. M. Sturgis, U. Thorsteinsdottir, T. Rafnar, A. de la Chapelle and K. Stefansson: A genome-wide association study yields five novel thyroid cancer risk loci. *Nat Commun*, 8, 14517 (2017)
DOI: 10.1038/ncomms14517
151. J. Ojha, V. Codd, C. P. Nelson, N. J. Samani, I. V. Smirnov, N. R. Madsen, H. M. Hansen, A. J. de Smith, P. M. Bracci, J. K. Wiencke, M. R. Wrensch, J. L. Wiemels, K. M. Walsh and E. C. T. Group: Genetic Variation Associated with Longer Telomere Length Increases Risk of Chronic Lymphocytic Leukemia. *Cancer Epidemiol Biomarkers Prev*, 25(7), 1043-9 (2016)
DOI: 10.1158/1055-9965.EPI-15-1329
152. C. M. Phelan, K. B. Kuchenbaecker, J. P. Tyrer, S. P. Kar, K. Lawrenson, S. J. Winham, J. Dennis, A. Pirie, M. J. Riggan, G. Chornokur, M. A. Earp, P. C. Lyra, Jr., J. M. Lee, S. Coetzee, J. Beesley, L. McGuffog, P. Soucy, E. Dicks, A. Lee, D. Barrowdale, J. Lecarpentier, G. Leslie, C. M. Aalfs, K. K. H. Aben, M. Adams, J. Adlard, I. L. Andrulis, H. Anton-Culver, N. Antonenkova, A. s. group, G. Aravantos, N. Arnold, B. K. Arun, B. Arver, J. Azzollini, J. Balmana, S. N. Banerjee, L. Barjhoux, R. B. Barkardottir, Y. Bean, M. W. Beckmann, A. Beeghly-Fadiel, J. Benitez, M. Bermisheva, M. Q. Bernardini, M. J. Birrer, L. Bjorge, A. Black, K. Blankstein, M. J. Blok, C. Bodelon, N. Bogdanova, A. Bojesen, B. Bonanni, A. Borg, A. R. Bradbury, J. D. Brenton, C. Brewer, L. Brinton, P. Broberg, A. Brooks-Wilson, F. Bruinsma, J. Brunet, B. Buecher, R. Butzow, S. S. Buys, T. Caldes, M. A. Caligo, I. Campbell, R. Cannioto, M. E. Carney, T. Cescon, S. B. Chan, J. Chang-Claude, S. Chanock, X. Q. Chen, Y. E. Chiew, J. Chiquette, W. K. Chung, K. B. M. Claes, T. Conner, L. S. Cook, J. Cook, D. W. Cramer, J. M. Cunningham, A. A. D'Aloisio, M. B. Daly, F. Damiola, S. D. Damirovna, A. Dansonka-Mieszkowska, F. Dao, R. Davidson, A. DeFazio, C. Delnatte, K. F. Doherty, O. Diez, Y. C. Ding, J. A. Doherty, S. M. Domchek, C. M. Dorfling, T. Dork, L. Dossus, M. Duran, M. Durst, B. Dworniczak, D. Eccles, T. Edwards, R. Eeles, U. Eilber, B. Ejlersen, A. B. Ekici, S. Ellis, M. Elvira, E. Study, K. H. Eng, C. Engel, D. G. Evans, P. A. Fasching, S. Ferguson, S. F. Ferrer, J. M. Flanagan, Z. C. Fogarty, R. T. Fortner, F. Fostira, W. D. Foulkes, G. Fountzilias, B. L. Fridley, T. M. Friebel, E. Friedman, D. Frost, P. A. Ganz, J. Garber, M. J. Garcia, V. Garcia-Barberan, A. Gehrig, G. S. Collaborators, A. Gentry-Maharaj, A. M. Gerdes, G. G. Giles, R. Glasspool, G. Glendon, A. K. Godwin, D. E. Goldgar, T. Goranova, M. Gore, M. H. Greene, J. Gronwald, S. Gruber, E. Hahnen, C. A. Haiman, N. Hakansson, U. Hamann, T. V. O. Hansen, P. A. Harrington, H. R. Harris, J. Hauke, H. Study, A. Hein, A. Henderson, M. A. T. Hildebrandt, P. Hillemanns, S. Hodgson, C. K. Hogdall, E. Hogdall, F. B. L. Hogervorst, H. Holland,

- M. J. Hooning, K. Hosking, R. Y. Huang, P. J. Hulick, J. Hung, D. J. Hunter, D. G. Huntsman, T. Huzarski, E. N. Imyanitov, C. Isaacs, E. S. Iversen, L. Izatt, A. Izquierdo, A. Jakubowska, P. James, R. Janavicius, M. Jernetz, A. Jensen, U. B. Jensen, E. M. John, S. Johnatty, M. E. Jones, P. Kannisto, B. Y. Karlan, A. Karnezis, K. Kast, K. C. Investigators, C. J. Kennedy, E. Khusnutdinova, L. A. Kiemeny, J. I. Kiiski, S. W. Kim, S. K. Kjaer, M. Kobel, R. K. Kopperud, T. A. Kruse, J. Kupryjanczyk, A. Kwong, Y. Laitman, D. Lambrechts, N. Larranaga, M. C. Larson, C. Lazaro, N. D. Le, L. Le Marchand, J. W. Lee, S. B. Lele, A. Leminen, D. Leroux, J. Lester, F. Lesueur, D. A. Levine, D. Liang, C. Liebrich, J. Lilyquist, L. Lipworth, J. Lissowska, K. H. Lu, J. Lubinski, C. Luccarini, L. Lundvall, P. L. Mai, G. Mendoza-Fandino, S. Manoukian, L. Massuger, T. May, S. Mazoyer, J. N. McAlpine, V. McGuire, J. R. McLaughlin, I. McNeish, H. Meijers-Heijboer, A. Meindl, U. Menon, A. R. Mensenkamp, M. A. Merritt, R. L. Milne, G. Mitchell, F. Modugno, J. Moes-Sosnowska, M. Moffitt, M. Montagna, K. B. Moysich, A. M. Mulligan, J. Musinsky, K. L. Nathanson, L. Nedergaard, R. B. Ness, S. L. Neuhausen, H. Nevanlinna, D. Niederacher, R. L. Nussbaum, K. Odunsi, E. Olah, O. I. Olopade, H. Olsson, C. Olswold, D. M. O'Malley, K. R. Ong, N. C. Onland-Moret, O. s. group, N. Orr, S. Orsulic, A. Osorio, D. Palli, L. Papi, T. W. Park-Simon, J. Paul, C. L. Pearce, I. S. Pedersen, P. H. M. Peeters, B. Peissel, A. Peixoto, T. Pejovic, L. M. Pelttari, J. B. Permuth, P. Peterlongo, L. Pezzani, G. Pfeiler, K. A. Phillips, M. Piedmonte, M. C. Pike, A. M. Piskorz, S. R. Poblete, T. Pocza, E. M. Poole, B. Poppe, M. E. Porteous, F. Prieur, D. Prokofyeva, E. Pugh, M. A. Pujana, P. Pujol, P. Radice, J. Rantala, C. Rappaport-Fuerhauser, G. Rennert, K. Rhiem, P. Rice, A. Richardson, M. Robson, G. C. Rodriguez, C. Rodriguez-Antona, J. Romm, M. A. Rookus, M. A. Rossing, J. H. Rothstein, A. Rudolph, I. B. Runnebaum, H. B. Salvesen, D. P. Sandler, M. J. Schoemaker, L. Senter, V. W. Setiawan, G. Severi, P. Sharma, T. Shelford, N. Siddiqui, L. E. Side, W. Sieh, C. F. Singer, H. Sobol, H. Song, M. C. Southey, A. B. Spurdle, Z. Stadler, D. Steinemann, D. Stoppa-Lyonnet, L. E. Sucheston-Campbell, G. Sukiennicki, R. Sutphen, C. Sutter, A. J. Swerdlow, C. I. Szabo, L. Szafron, Y. Y. Tan, J. A. Taylor, M. K. Tea, M. R. Teixeira, S. H. Teo, K. L. Terry, P. J. Thompson, L. C. V. Thomsen, D. L. Thull, L. Tihomirova, A. V. Tinker, M. Tischkowitz, S. Tognazzo, A. E. Toland, A. Tone, B. Trabert, R. C. Travis, A. Trichopoulou, N. Tung, S. S. Tworoger, A. M. van Altena, D. Van Den Berg, A. H. van der Hout, R. B. van der Luijt, M. Van Heetvelde, E. Van Nieuwenhuysen, E. J. van Rensburg, A. Vanderstichele, R. Varon-Mateeva, A. Vega, D. V. Edwards, I. Vergote, R. A. Vierkant, J. Vijai, A. Vratimos, L. Walker, C. Walsh, D. Wand, S. Wang-Gohrke, B. Wappenschmidt, P. M. Webb, C. R. Weinberg, J. N. Weitzel, N. Wentzensen, A. S. Whittemore, J. T. Wijnen, L. R. Wilkens, A. Wolk, M. Woo, X. Wu, A. H. Wu, H. Yang, D. Yannoukakos, A. Zogas, K. K. Zorn, S. A. Narod, D. F. Easton, C. I. Amos, J. M. Schildkraut, S. J. Ramus, L. Ottini, M. T. Goodman, S. K. Park, L. E. Kelemen, H. A. Risch, M. Thomassen, K. Offit, J. Simard, R. K. Schmutzler, D. Hazelett, A. N. Monteiro, F. J. Couch, A. Berchuck, G. Chenevix-Trench, E. L. Goode, T. A. Sellers, S. A. Gayther, A. C. Antoniou and P. D. P. Pharoah: Identification of 12 new susceptibility loci for different histotypes of epithelial ovarian cancer. *Nat Genet*, 49(5), 680-691 (2017)
DOI: 10.1038/ng.3826
153. K. M. Walsh, T. P. Whitehead, A. J. de Smith, I. V. Smirnov, M. Park, A. A. Endicott, S. S. Francis, V. Codd, E. C. T. Group, N. J. Samani, C. Metayer and J. L. Wiemels: Common genetic variants associated with telomere length confer risk for neuroblastoma and other childhood cancers. *Carcinogenesis*, 37(6), 576-582 (2016)
DOI: 10.1093/carcin/bgw037
154. M. H. Law, D. T. Bishop, J. E. Lee, M. Brossard, N. G. Martin, E. K. Moses, F. Song, J. H. Barrett, R. Kumar, D. F. Easton, P. D. P. Pharoah, A. J. Swerdlow, K. P. Kypreou, J. C. Taylor, M. Harland, J. Randerson-Moor, L. A. Akslen, P. A. Andresen, M. F. Avril, E. Azizi, G. B. Scarra, K. M. Brown, T. Debniak, D. L. Duffy, D. E. Elder, S. Fang, E. Friedman, P. Galan, P. Ghiorzo, E. M. Gillanders, A. M. Goldstein, N. A. Gruis, J. Hansson, P. Helsing, M. Hocevar, V. Hoiom, C. Ingvar, P. A. Kanetsky, W. V. Chen, M. E. L. C. Geno, I. Essen-Heidelberg, S. D. H. S. Group, M. Q. Q. Investigators, A. Investigators, A. M. S. Group, M. T. Landi, J. Lang, G. M. Lathrop, J. Lubinski, R. M. Mackie, G. J. Mann, A. Molven, G. W. Montgomery, S. Novakovic,

- H. Olsson, S. Puig, J. A. Puig-Butille, A. A. Qureshi, G. L. Radford-Smith, N. van der Stoep, R. van Doorn, D. C. Whiteman, J. E. Craig, D. Schadendorf, L. A. Simms, K. P. Burdon, D. R. Nyholt, K. A. Pooley, N. Orr, A. J. Stratigos, A. E. Cust, S. V. Ward, N. K. Hayward, J. Han, H. J. Schulze, A. M. Dunning, J. A. N. Bishop, F. Demenais, C. I. Amos, S. MacGregor and M. M. Iles: Genome-wide meta-analysis identifies five new susceptibility loci for cutaneous malignant melanoma. *Nat Genet*, 47(9), 987-995 (2015)
DOI: 10.1038/ng.3373
155. L. Rode, B. G. Nordestgaard and S. E. Bojesen: Long telomeres and cancer risk among 95 568 individuals from the general population. *Int J Epidemiol*, 45(5), 1634-1643 (2016)
DOI: 10.1093/ije/dyw179
156. T. E. Fingerlin, E. Murphy, W. Zhang, A. L. Peljto, K. K. Brown, M. P. Steele, J. E. Loyd, G. P. Cosgrove, D. Lynch, S. Groshong, H. R. Collard, P. J. Wolters, W. Z. Bradford, K. Kossen, S. D. Seiwert, R. M. du Bois, C. K. Garcia, M. S. Devine, G. Gudmundsson, H. J. Isaksson, N. Kaminski, Y. Zhang, K. F. Gibson, L. H. Lancaster, J. D. Cogan, W. R. Mason, T. M. Maher, P. L. Molyneaux, A. U. Wells, M. F. Moffatt, M. Selman, A. Pardo, D. S. Kim, J. D. Crapo, B. J. Make, E. A. Regan, D. S. Walek, J. J. Daniel, Y. Kamatani, D. Zelenika, K. Smith, D. McKean, B. S. Pedersen, J. Talbert, R. N. Kidd, C. R. Markin, K. B. Beckman, M. Lathrop, M. I. Schwarz and D. A. Schwartz: Genome-wide association study identifies multiple susceptibility loci for pulmonary fibrosis. *Nat Genet*, 45(6), 613-20 (2013)
DOI: 10.1038/ng.2609
157. C. G. Maubaret, K. D. Salpea, C. E. Romanoski, L. Folkersen, J. A. Cooper, C. Stephanou, K. W. Li, J. Palmen, A. Hamsten, A. Neil, J. W. Stephens, A. J. Lusis, P. Eriksson, P. J. Talmud, S. E. Humphries, G. Simon Broome Research and E. consortium: Association of TERC and OBFC1 haplotypes with mean leukocyte telomere length and risk for coronary heart disease. *PLoS One*, 8(12), e83122 (2013)
DOI: 10.1371/journal.pone.0083122
158. H. Ding, F. Yan, L. L. Zhou, X. H. Ji, X. N. Gu, Z. W. Tang and R. H. Chen: Association between previously identified loci affecting telomere length and coronary heart disease (CHD) in Han Chinese population. *Clin Interv Aging*, 9, 857-61 (2014)
159. M. Mangino, S. J. Hwang, T. D. Spector, S. C. Hunt, M. Kimura, A. L. Fitzpatrick, L. Christiansen, I. Petersen, C. C. Elbers, T. Harris, W. Chen, S. R. Srinivasan, J. D. Kark, A. Benetos, S. El Shamieh, S. Visvikis-Siest, K. Christensen, G. S. Berenson, A. M. Valdes, A. Vinuela, M. Garcia, D. K. Arnett, U. Broeckel, M. A. Province, J. S. Pankow, C. Kammerer, Y. Liu, M. Nalls, S. Tishkoff, F. Thomas, E. Ziv, B. M. Psaty, J. C. Bis, J. I. Rotter, K. D. Taylor, E. Smith, N. J. Schork, D. Levy and A. Aviv: Genome-wide meta-analysis points to CTC1 and ZNF676 as genes regulating telomere homeostasis in humans. *Hum Mol Genet*, 21(24), 5385-94 (2012)
DOI: 10.1093/hmg/dds382
160. Y. C. Lin, J. W. Shih, C. L. Hsu and J. J. Lin: Binding and partial denaturing of G-quartet DNA by Cdc13p of *Saccharomyces cerevisiae*. *J Biol Chem*, 276(50), 47671-4 (2001)
DOI: 10.1074/jbc.M104989200
161. D. L. Croteau, V. Popuri, P. L. Opresko and V. A. Bohr: Human RecQ helicases in DNA repair, recombination, and replication. *Annu Rev Biochem*, 83, 519-52 (2014)
DOI: 10.1146/annurev-biochem-060713-035428
162. S. L. Davies, P. S. North and I. D. Hickson: Role for BLM in replication-fork restart and suppression of origin firing after replicative stress. *Nat Struct Mol Biol*, 14(7), 677-9 (2007)
DOI: 10.1038/nsmb1267
163. N. B. Larsen and I. D. Hickson: RecQ Helicases: Conserved Guardians of Genomic Integrity. *Adv Exp Med Biol*, 767, 161-84 (2013)
DOI: 10.1007/978-1-4614-5037-5_8
164. C. L. Geronimo and V. A. Zakian: Getting it done at the ends: Pif1 family DNA helicases and telomeres. *DNA Repair (Amst)*, 44, 151-8 (2016)
DOI: 10.1016/j.dnarep.2016.05.021
165. O. Mendoza, A. Bourdoncle, J. B. Boule, R. M. Brosh, Jr. and J. L. Mergny: G-quadruplexes

Functions of the CST complex

and helicases. *Nucleic Acids Res*, 44(5), 1989-2006 (2016)
DOI: 10.1093/nar/gkw079

Abbreviations: HU: hydroxyurea, nt: nucleotide, ssDNA: single-stranded DNA; dsDNA: double-stranded DNA; DNA polymerase alpha/primase: pol alpha; G4: G-quadruplex; FISH: fluorescence *in situ* hybridization

Key Words: CTC1, STN1, TEN1, CST, AAF, DNA replication, Telomere, Review

Send correspondence to: Jason A. Stewart, Department of Biological Sciences, University of South Carolina, 715 Sumter St, CLS 401, Columbia, SC 29208, Tel: 803-576-5637, Fax: 803-777-4002, E-mail: jason.stewart@sc.edu